



**Peel District School Board**

**Special Education Programs and Services**

**2013 - 2014**



**PEEL DISTRICT SCHOOL BOARD SPECIAL EDUCATION  
AMENDMENTS 2013 – 2014**

	Page
Special Education Support Services	4
Consultation Process	4
Summary of Programs and Services	4
Summary of Elementary Teacher Allocations	5
Elementary Non-Contained	6
Summary of Secondary Teacher Allocations	7
Teaching Assistant Allocations	8
Professional Support Services	10
Elementary Contained Class Locations	11
Summary of Changes to Elementary Programs and Locations	22
Secondary Programs	24
Projects	30
Elementary Panel Staff	31
Secondary Panel Staff	33
Staff Development	35
Transportation	42

## **A. Special Education Support Services**

### **Consultation Process**

Standards produced by the Ministry of Education for the development of a Special Education Plan include an expectation that stakeholders will be consulted with regards to programs and services offered annually.

System consultation was elicited through:

- SEAC meetings representing twelve associations
- Review of staffing needs with superintendents, Special Education Resource Teachers, Secondary Resource Teachers-Special Education and Secondary Special Education Department heads with special education responsibilities

The goal of the consultation process was to understand concerns and garner suggestions from the different associations represented by SEAC.

The results of annual consultation and internal reviews are considered in the on-going work of the review of the full special education delivery model.

### **Summary of Special Education Programs and Services**

- Special education program teacher allocation
- Allocation of teaching assistants
- Professional support services
- Summary of special education programs by location-elementary
- Summary of special education programs by location-secondary

**SUMMARY OF ELEMENTARY TEACHER ALLOCATIONS**  
**Teacher Full Time Equivalent (FTE)**

	<b>2012-2013 FTE</b>	<b>2013-2014 FTE</b>
Interval	14	14
Communication	62	62
Developmental Disabilities	21	20
Developmental Disabilities / Special Needs / ASD	16	20
Enhanced Learning	23	25
General Learning Disability	51	49
Hard of Hearing	4	4
Kindergarten Support Program	3.5	4
Kindergarten Transition Language Class	8	8
Primary Transition Program	8	9
Autism Spectrum Disorder	29	32
Care and/or Treatment Programs, Custody and Correctional Facilities	9	9
<b>TOTAL FTE</b>	<b>248.5</b>	<b>256.0</b>

**ELEMENTARY PROGRAMS NON-CONTAINED**  
**Teacher Full Time Equivalent (FTE)**

	<b>2012-2013 FTE</b>	<b>2013-2014 FTE</b>
In-School Support Program In-School Enhanced Learning Program	389.1	389.1
Intermediate Contact Program	20.0	20.5
<b>ITINERANT TEACHERS</b>		
ASD Resource Team	11	11
Hard of Hearing	13	13
Intermediate Contact Support	3	-
Mobile Behaviour Support Team	2	-
Intensive Support	-	5
Special Needs	9.5	9.5
Visually Impaired	8	8
<b>TOTAL FTE</b>	<b>455.6</b>	<b>456.1</b>

**SUMMARY OF SECONDARY TEACHER ALLOCATIONS**  
**Teacher Full Time Equivalent (FTE)**

	<b>2012 - 2013 FTE</b>	<b>2013 - 2014 FTE</b>
Care and/or Treatment Program, Custody and Correctional Facility	43	43
Learning Support (LS1/LS2)	64	61.83
Programs for Students with Developmental Disabilities	71	71
District Programs for Students with Developmental Disabilities (DDD)	13.67	15.67
Resource Programs for Students with Developmental Disabilities (DD R)	5.33	5.33
Resource Program for Students with an Autism Spectrum Disorder (ASD R)	20	21.67
Vocational Level 1	25.17	26
Itinerant - Autism Spectrum Disorder, Hard of Hearing, Special Needs (ASD, HOH, SN)	6	6
Regional Communications Program for Students with a Learning Disability	6.84	6.50
In School Support and Behaviour/Contact	62.83	62.50
Itinerant - Intensive Support	2	2
<b>TOTAL FTE</b>	<b>319.84</b>	<b>321.50</b>

## TEACHING ASSISTANT ALLOCATION

<b>ELEMENTARY ALLOCATIONS</b>		
	2012-2013	2013-2014
Students integrated into the mainstream	571	567
Classes for Students with Developmental Disabilities (DD)	115.5	123
Classes for Students with an Autism Spectrum Disorder (ASD)	83	90
Hard of Hearing	4	4
General Learning Disabilities Classes (GLD)	52.5	49
<b>TOTAL</b>	<b>826</b>	<b>833</b>

<b>SECONDARY ALLOCATIONS</b>		
	2012-2013	2013-2014
Students integrated into the mainstream	62.5	65.5
Program for Students with Developmental Disabilities (DD) (Applewood + Parkholme)	176.5	182
Resource Program for Students with a DD (DD R)	12	12
Resource Program for Students with an ASD (ASD R)	52.5	52
District Program for Students with a Developmental Disability (TLK + Lincoln Alexander)	29	34
Vocational Level 1 Program	14	15
<b>TOTAL</b>	<b>346.5</b>	<b>360.5</b>

<b>ELEMENTARY BEHAVIOUR ALLOCATIONS</b>		
	2012-2013	2013-2014
Contained Programs	189	22
Superintendent BTAs		171.5
Intermediate Contact Itinerant	3	-
Mobile Behaviour Services	8	-
Intensive Support	-	10
<b>TOTAL</b>	<b>200</b>	<b>203.5</b>



<b>SECONDARY BEHAVIOUR ALLOCATIONS</b>		
	2012-2013	2013-2014
Superintendent BTAs	40.5	40.5
Mobile Behaviour Services	8	-
Intensive Support	-	4
K-12 Transition Support	2.5	-
<b>TOTAL</b>	<b>51</b>	<b>44.5</b>

<b>TOTAL NUMBER OF TEACHING ASSISTANTS ALLOCATIONS</b> (excluding non-Special Education Funded TAs)	
2013-2014	<b>1441.5</b>
2012-2013	<b>1423.5</b>
2011-2012	<b>1405.5</b>
2010-2011	<b>1341.5</b>
2009-2010	<b>1237.5</b>

#### **NON-SPECIAL EDUCATION FUNDED TEACHING ASSISTANT ALLOCATIONS**

<b>ELEMENTARY ADDITIONALLY FUNDED TA ALLOCATION</b>		
	2012-2013	2013-2014
Technical Assistance	3	3
<b>GOVERNMENT GRANT PORTION</b>		
Care and/or Treatment Programs, Custody and Correction Facilities	6	6
<b>TOTAL</b>	<b>9</b>	<b>9</b>
<b>SECONDARY ADDITIONALLY FUNDED TA ALLOCATION</b>		
	2012-2013	2013-2014
<b>GOVERNMENT GRANT PORTION</b>		
Care and/or Treatment Programs, Custody and Correction Facilities	10	10
Roy McMurtry	10	10
<b>TOTAL</b>	<b>20</b>	<b>20</b>

## PROFESSIONAL SUPPORT SERVICES

<b>EDUCATIONAL SPEECH AND LANGUAGE PATHOLOGY SERVICES</b>		
<p>The primary aim of speech and language services is to improve a student's educational success by focusing on academic programming and communication in the classroom. To this end speech and language services provide a spectrum of integrated communication programs to support students who are communicatively challenged.</p> <p>The services assist students whose language, speech, voice or hearing is delayed or disordered. Intervention is provided through assessments and individual, group and classroom programs as well as consultations with teachers, parents and community agencies. Workshops are available to parents and school staff.</p>		
<b>Speech-Language Pathologists</b>	<b>2012-2013</b>	<b>2013-2014</b>
(does not include Chief Speech and Language Pathologist)	<b>53.0*</b>	<b>51.0*</b>

<b>PSYCHOLOGICAL SERVICES</b>		
<p>Service for students with learning or behavioural needs range from individual psychoeducational assessment to consultation with teacher and teacher assistants regarding programming and behaviour management strategies. Psychoeducational Consultants provide counselling and liaison with community services.</p>		
<b>Psychoeducational Consultants</b>	<b>2012-2013</b>	<b>2013-2014</b>
(does not include Chief Psychologist, Senior Psychologist, Coordinator of Behaviour Programs)	<b>58.0*</b>	<b>57.0*</b>

<b>SCHOOL SOCIAL WORK SERVICES</b>		
<p>School Social Work Services are available to assist students whose attendance and/or social-emotional adjustment has been impacted by personal, social or family difficulties. Social workers assist schools in identifying and helping to correct those obstacles which interfere with students' ability to benefit from the educational opportunities available to them. School Social Work Services include assessment and counselling of students and parents, mandated attendance and Supervised Alternative Learning (SAL) responsibilities, crisis intervention, consultation, community liaison, Reaching Out and Learning to 18 initiatives.</p>		
<b>Social Workers</b>	<b>2012-2013</b>	<b>2013-2014</b>
(does not include Chief Social Worker, Senior Social Worker)	<b>58.0*</b>	<b>57.0*</b>

\*Includes Alternative Programs, Hubs and Urban Funding

## ELEMENTARY CONTAINED CLASSES

### Enhanced Learning Classes (ELC)

Superintendent	School	Class	Allocation	Max Enrolment
Bent	Middlebury	PELC	1	20
	Middlebury	JELC	1	23
Courtin	Balmoral Drive Senior	IELC	1	25
	Greenbriar	IELC	2	50
Dowling	Thorn Lodge	P/JELC	1	20
	Thorn Lodge	JELC	1	23
	Homelands Sr.	IELC	3	75
Edwards	Camilla Road Senior	IELC	2	50
Fournier	Silverthorn	P/JELC	1	23
Uniac	Caledon East	JELC	1	23
	Allan Drive Middle	IELC	1	25
	Caledon East	IELC	1	25
Haarmann	Somerset Drive	PELC	1	20
	Somerset Drive	JELC	1	23
	Robert H. Lagerquist Senior	IELC	1	25
Mason	Helen Wilson	PELC	1	20
	Helen Wilson	JELC	1	23
	Sir John A. Macdonald Senior	IELC	1	25
Grewal	Dolphin Senior	IELC	3	75
Speers	Fallingbrook	IELC	1	25
<b>TOTAL</b>			<b>26</b>	<b>618</b>

**Primary Interval Classes (PINT)  
Junior Interval Classes (JINT)**

<b>Superintendent</b>	<b>School</b>	<b>Class</b>	<b>Allocation</b>	<b>Max Enrolment</b>
Bent	McKinnon	PINT	1	8
Courtin	Grenoble	PINT	1	8
	Jefferson	JINT	1	8
Daws	Marvin Heights	PINT	1	8
deFreitas	Northwood	P/JINT	1	8
Edwards	Munden Park	JINT	1	8
	Floradale	PINT	1	8
Fournier	Nahani Way	PINT	1	8
Uniac				
Mason	Agnes Taylor	PINT	1	8
	Arnott Charlton	JINT	1	8
	Kingswood Drive	JINT	1	8
	Hickory Wood	P/JINT	1	8
Speers	McBride	JINT	1	8
Grewal	Miller's Grove	JINT	1	8
<b>TOTAL</b>			<b>14</b>	<b>112</b>

## General Learning Disability Classes (GLD)

Superintendent	School	Class	Allocation	Max Enrolment
Bent	Castlebridge	PGLD	1	10
	Castlebridge	JGLD	1	14
	Erin Centre Middle	IGLD	1	14
Courtin	Balmoral Drive Senior	IGLD	1	14
	Earnscliffe Senior	IGLD	1	14
	Greenbriar	IGLD	1	14
Daws	Brandon Gate	PGLD	1	10
	Brandon Gate	JGLD	1	14
	Beryl Ford	IGLD	1	14
	Calderstone Middle	IGLD	1	14
	Darcel Avenue Senior	IGLD	1	14
deFreitas	McHugh	PGLD	1	10
	McHugh	JGLD	1	14
	Beatty Flemming Senior	IGLD	1	14
	Centennial Senior	IGLD	1	14
Dowling	Elmcrest	P/JGLD	1	14
	Erin Mills Senior	IGLD	1	14
	Hillside Middle	IGLD	1	14
Edwards	Camilla Road Senior	IGLD	1	14
	The Valleys Senior	IGLD	1	14
Fournier	Barondale	PGLD	1	10
	Barondale	JGLD	1	14
	Bristol Road Middle	IGLD	1	14
	Glenhaven Senior	IGLD	1	14
Uniac	Herb Campbell	IGLD	1	14
Haarmann	Burnt Elm	PGLD	1	10
	Esker Lake	PGLD	1	10
	Burnt Elm	JGLD	1	14
	Esker Lake	JGLD	1	14
	Cheyne Middle	IGLD	1	14
	McCrimmon Middle	IGLD	1	14
Mason	Sir Winston Churchill	JGLD	1	14
	Parkway	JGLD	1	14
	Gordon Graydon Senior	IGLD	2	28
	Sir John A. Macdonald Senior	IGLD	1	14

<b>General Learning Disability Classes (GLD) cont'd</b>				
Noble	Robert J. Lee	PGLD	1	10
	Robert J. Lee	JGLD	1	14
	Treeline	JGLD	1	14
	Mountain Ash Middle	IGLD	1	14
	Treeline	IGLD	1	14
Speers	Queenston Drive	JGLD	1	14
	Fallingbrook	IGLD	2	28
	Queenston Drive	IGLD	1	14
Grewal	Ray Underhill	PGLD	1	10
	Ray Underhill	JGLD	1	14
	Lisgar Middle	IGLD	1	14
	Dolphin Senior	IGLD	1	14
<b>TOTAL</b>			<b>49</b>	<b>654</b>

## Communication Classes (COM)

Superintendent	School	Class	Allocation	Max Enrolment
Bent	McKinnon	JCOM	1	8
	Ruth Thompson Middle	ICOM	1	8
Courtin	Eastbourne Drive	JCOM	1	8
	Balmoral	ICOM	1	8
	Earncliffe Sr.	ICOM	1	8
Daws	Brandon Gate	P/JCOM	1	8
	Morning Star Middle	ICOM	2	16
deFreitas	Ridgeview	PCOM	1	8
	Ridgeview	JCOM	1	8
	Ingleborough	ICOM	1	8
	Royal Orchard Middle	ICOM	2	16
Dowling	Willow Glen	P/JCOM	1	8
	Willow Glen	PCOM	1	8
	Willow Glen	JCOM	1	8
	Erin Mills Senior	ICOM	2	16
	Hillcrest Middle	ICOM	3	24
Edwards	Clifton	PCOM	1	8
	Janet I. McDougald	PCOM	1	8
	Clifton	JCOM	1	8
	Janet I. McDougald	JCOM	1	8
Fournier	Cooksville Creek	PCOM	1	8
	Cooksville Creek	JCOM	1	8
	Bristol Road Middle	ICOM	2	16
Uniac	Great Lakes	PCOM	1	8
	Macville	PCOM	1	8
	Great Lakes	JCOM	1	8
	Macville	JCOM	1	8
	Allan Drive Middle	ICOM	1	8
	Great Lakes	ICOM	1	8
	Macville	ICOM	2	16
Haarmann	Conestoga	PCOM	1	8
	Esker Lake	PCOM	1	8
	Conestoga	JCOM	2	16
	Robert H. Lagerquist Senior Cheyne	ICOM ICOM	1 2	8 16

### Communication Classes (COM) (con't)

Mason	Sir Wilfred Laurier	P/JCOM	1	8
	Sir Wilfred Laurier	JCOM	1	8
	Gordon Graydon Senior	ICOM	1	8
	Fletcher's Creek	ICOM	2	16
	W.G. Davis	ICOM	1	8
Noble	Treeline	JCOM	1	8
Speers	McBride Avenue	JCOM	1	8
Grewal	Plowman's Park	PCOM	2	16
	Willow Way	PCOM	1	8
	Plowman's Park	JCOM	2	16
	Willow Way	JCOM	2	16
	Dolphin Senior	ICOM	2	16
	Edenwood Middle	ICOM	1	8
<b>TOTAL</b>			<b>62</b>	<b>496</b>

### Kindergarten Support Program (KSP)

Superintendent	School	Class	Allocation	Max Enrolment
deFreitas	Queen Street	KSP FDK	1	6
Dowling	Elmcrest	KSP FDK	1	6
Uniac	SouthFields Village	KSP FDK	1	6
Grewal	Trelawny	KSP FDK	1	6
<b>TOTAL</b>			<b>4</b>	<b>24</b>

FDK – Full Day Kindergarten

### Kindergarten Transition Language Class (KTLC)

Superintendent	School	Class	Allocation	Max Enrolment
Edwards	Clifton	KTLC FDK	1	6
Fournier	Cooksville Creek	KTLC FDK	1	6
Uniac	Macville	KTLC FDK	1	6
Haarmann	Conestoga	KTLC FDK	2	12
Haarmann	Esker Lake	KTLC	1	12
Grewal	Plowman's Park	KTLC FDK	2	12
<b>TOTAL</b>			<b>8</b>	<b>54</b>



**Classes for Students with Developmental Disabilities (DD)  
Classes for Students with Developmental Disabilities/Special Needs (DD/SN)  
Classes for Students with Developmental Disabilities/Autism Spectrum Disorder (DD/ASD)**

<b>Superintendent</b>	<b>School</b>	<b>Class</b>	<b>Allocation</b>	<b>Max Enrolment</b>
Bent	Artesian Drive	P/JDD	1	10
	Ruth Thompson Middle	IDD	1	10
	Thomas Street Middle	IDD	1	10
	Erin Centre Middle	IDD/SN	1	6
Courtin	Balmoral Drive Senior	IDD	1	10
	Greenbriar	IDD	1	10
	Goldcrest	P/JDD/ASD	1	6
	Williams Parkway Senior	IDD/ASD	1	6
Daws	Claireville	P/JDD	1	10
	Beryl Ford	IDD	1	10
deFreitas	Eldorado	JDD	1	10
	Centennial Senior	IDD	1	10
	Sir William Gage Middle	IDD	1	10
Dowling	Garthwood Park	P/JDD/SN	1	6
Edwards	Queen Elizabeth Senior	IDD	1	10
	Briarwood	P/JDD/SN	1	6
Fournier	Champlain Trail	P/JDD	1	10
	Nahani Way	P/JDD	1	10
	Bristol Road Middle	IDD	1	10
	Fairwind Senior	IDD	1	10
	Fairwind Senior	IDD/SN	1	6
	Dixie	P/JDD/ASD	1	6
	Tomken Road Middle	IDD/ASD	1	6
Haarmann	Brisdale	PDD	1	10
	Cheyne Middle	IDD/SN	1	6
	Esker Lake	JDD/SN	1	6
	McCrimmon Middle	IDD/ASD	1	6
Mason	Gordon Graydon Senior	IDD	1	10
	Sir Wilfrid Laurier	P/JDD/SN	1	6
	Sir Winston Churchill	IDD/SN	1	6
	Fletcher's Creek Middle	IDD/ASD	1	6
Noble	Robert J. Lee	P/JDD	1	10
	Carberry	P/JDD/ASD	1	6
	Lougheed Middle	IDD/ASD	1	6
	Lougheed Middle	IDD	1	10
Speers	Sherwood Mills	P/JDD/ASD	1	6
	Levi Creek	P/JDD/ASD	1	6
Grewal	Shelter Bay	P/JDD	1	10
	Hazel McCallion Senior	IDD	1	10
	Hazel McCallion Senior	IDD/ASD	1	6
	Lisgar Middle	IDD/ASD	1	6
<b>TOTAL</b>			<b>41</b>	<b>330</b>

**Classes for students with an Autism Spectrum Disorder (ASD)  
Primary Transition Program (PTP)**

<b>Superintendent</b>	<b>School</b>	<b>Class</b>	<b>Allocation</b>	<b>Max Enrolment</b>
Bent	Thomas Street Middle	IASD	1	8
	Castlebridge	P/JASD	1	6
	Middleburry	P/JASD	1	6
	Ruth Thompson Middle	IASD-R	1	8
	Castlebridge	PTP	1	6
Courtin	Eastbourne	PTP	1	6
	Williams Parkway Senior	IASD	1	8
	Greenbriar	IASD-R	1	8
Daws	Red Willow	P/JASD	1	6
deFreitas	Huttonville	IASD	1	8
	Royal Orchard Middle	IASD	1	8
Dowling	Sawmill Valley	P/JASD	1	6
	Thorn Lodge	P/JASD	1	6
	Homelands Senior	IASD-R	1	8
	Tecumseh	IASD-R	1	8
	Sawmill Valley	PTP	1	6
Edwards	Janet I. McDougald	P/JASD	1	6
	Thornwood	P/JASD	1	6
	Camilla Road Senior	IASD	1	8
	The Valley's Senior	IASD	1	8
Fournier	Tomken Road Middle	IASD	1	8
	Huntington Ridge	PTP	1	6
	Huntington Ridge	P/JASD	1	6
Haarmann	Burnt Elm	P/JASD	1	6
	Conestoga	P/JASD	1	6
	Terry Fox	P/JASD	1	6
	Robert H. Lagerquist Sr.	IASD-R	1	8
	Conestoga	PTP	1	6
	Esker Lake	PTP	1	6
Mason	Cherrytree	P/JASD	1	6
	Gordon Graydon Senior	IASD	1	8
	Sir John A. Macdonald Senior	IASD	1	8
	Helen Wilson	PTP	1	6
Noble	Mountain Ash Middle	IASD	1	8
	Robert J. Lee	P/JASD	1	6
Speers	David Leeder Middle	IASD-R	1	8
	Britannia	P/JASD	1	6
	Queenston Drive	IASD	1	8
	Britannia	PTP	1	6
	Derry West Village	PTP	1	6
Grewal	Hazel McCallion Senior	IASD	1	8
<b>TOTAL</b>			<b>41</b>	<b>282</b>

### Classes for students Hard of Hearing (HOH)

Superintendent	School	Class	Allocation	Max Enrolment
Fournier	Cooksville Creek	HOH	1	8
Uniac	Great Lakes	HOH	2	16
Mason	William G. Davis Senior	HOH	1	8
<b>TOTAL</b>			<b>4</b>	<b>32</b>

### Care and/or Treatment Programs, Custody and Correctional Facilities (Section 23)

Superintendent	School – Program	Class	Allocation	Max Enrolment
Courtin	Fallingdale - TRE-ADD	SEC 23	1	6
deFreitas	Beatty Flemming - Spectrum	SEC 23	1	6
	Centennial - Spectrum	SEC 23	1	6
Fournier	Glenhaven - PCC	SEC 23	1	6
Grewal	Kindree - PCC	SEC 23	2	12
Mason	Hickory Wood - ErinoakKids	SEC 23	1	6
Speers	Edenrose - ErinoakKids	SEC 23	2	12
<b>TOTAL</b>			<b>9</b>	<b>54</b>

## Intermediate Contact Program (ICP)

Superintendent	School	Allocation
Bent	Erin Centre Middle	0.5
	Thomas Street Middle	0.5
	Ruth Thompson	0.5
Courtin	Balmoral	0.5
	Earncliffe Srnior	0.5
	Greenbriar	0.5
	Williams Parkway Senior	0.5
Daws	Calderstone Middle	0.5
	Beryl Ford	0.5
	Morning Star Middle	0.5
deFreitas	Centennial Senior	0.5
	Royal Orchard Middle	0.5
	Sir William Gage Middle	0.5
	Beatty Flemming Senior	0.5
	Huttonville	0.5
Dowling	Hillcrest Middle	0.5
Edwards	Camilla Road Senior	0.5
	Queen Elizabeth Senior	0.5
	The Valleys Senior	0.5
Fournier	Allan A. Martin Senior	0.5
	Bristol Road Middle	0.5
	Fairwind Senior	0.5
	Glenhaven Senior	0.5
	Tomken Road Middle	0.5
Uniac	Allan Drive Middle	0.5
Haarmann	Cheyne	0.5
	McCrimmon Middle	0.5
	Robert H. Lagerquist Senior	0.5
Mason	Fletcher's Creek Senior	0.5
	Gordon Graydon Senior	0.5
	Sir John A. Macdonald Senior	0.5
	William G. Davis Senior	0.5
Noble	Lougheed Middle	0.5
	Mountain Ash Middle	0.5
	Sunny View Middle	0.5
Speers	David Leeder Middle	0.5
	Fallingbrook Middle	0.5
Grewal	Dolphin Sr.	0.5
	Edenwood Middle	0.5
	Hazel McCallion Senior	0.5
	Lisgar Middle	0.5
<b>TOTAL</b>		<b>20.5</b>

**In-School Support Program (ISSP)**  
**In-School Enhanced Learning Program (ISELP)**

<b>Superintendent</b>	<b>Allocation</b>
Bent	24.4
Courtin	29.1
Daws	35.0
deFreitas	39.9
Dowling	22.4
Edwards	29.0
Fournier	31.0
Uniac	21.7
Haarmann	31.0
Mason	26.5
Noble	41.4
Speers	29.7
Grewal	28.0
<b>TOTAL</b>	<b>389.1</b>

## Summary of Changes to Elementary Programs and Locations 2013 - 2014

Mississauga Field Office						
FROM			TO			
SOE	CLASS	SCHOOL	SOE	CLASS	SCHOOL	CHANGE
<b>Special Programs</b>						
			Fournier	IDD/SN	Fairwind Sr.	New Program
			Edwards	IASD	The Valleys Sr.	New Program
			Fournier	P/JASD	Huntington Ridge	New Program
			Speers	P/J DD/ASD	Levi Creek	New Program
<b>SECTION 23</b>						
Fournier	Section 23 PCC	Westacres	Grewal	Section 23 PCC (2 classes)	Kindree	Relocate 2 classes
<b>INTERVAL</b>						
Fournier	PINT	Silverthorn	Edwards	PINT	Floradale	Relocate
Dowling	PGLD	Elmcrest	Fournier	PINT	Nahani Way	Convert & relocate
<b>GLD</b>						
Dowling	JGLD	Elmcrest	Dowling	P/JGLD Gr. 3,4,5,	Elmcrest	Convert
<b>COM</b>						
Fournier	P/JCOM	Cooksville Creek	Fournier	PCOM	Cooksville Creek	Convert
Dowling	PCOM	Pheasant Run	Grewal	PCOM	Willow Way	Relocate
Dowling	JCOM	Pheasant Run	Grewal	JCOM	Willow Way	Relocate
<b>ELC</b>						
			Speers	IELC	Fallingbrook	New Program
			Dowling	P/JELC	Thorn Lodge	New Program
			Grewal	IELC	Dolphin Senior	New Program
<b>ALT PROG</b>						
Dowling	SEAP	Erin Mills M.S.	Grewal	SEAP	Edenwood	relocate

## North Field Office

FROM			TO			
	CLASS	SCHOOL	SOE	CLASS	SCHOOL	CHANGE
<b>SPECIAL PROGRAMS</b>						
Courtin	JGLD	Eastbourne	Courtin	PTP ASD	Eastbourne	Convert
			deFreitas	IASD	Huttonville	New Program
deFreitas	JDD	Huttonville	deFreitas	JDD	Eldorado	Relocate
			deFreitas	IDD	Sir William Gage	New Program
			Mason	I DD/ASD	Fletcher's Creek	New Program
<b>INTERVAL</b>						
deFreitas	PINT	McHugh	deFreitas	P/JINT	Northwood	Relocate
Uniac	JINT	Caledon East				Close
Mason	PINT	H.F. Loughin	Mason	PINT	Agnes Taylor	Relocate
Speers	JINT	Levi Creek	deFreitas	P/JINT	Hickory Wood	Relocate
<b>GLD</b>						
Courtin	IGLD	Williams Parkway	Mason	IGLD	Gordon Graydon	Relocate
<b>COM</b>						
deFreitas	P/J COM	Ridgeview	deFreitas	P COM	Ridgeview	Convert
Uniac	P/J COM	Great Lakes	Uniac	P COM	Great Lakes	Convert
deFreitas	ICOM (4)	Royal Orchard M.S.	Haarmann	ICOM (2)	Cheyne M.S.	Relocate 2 ICOM classes
deFreitas	ICOM (2)	Ingleborough	Mason	ICOM (1)	W.G. Davis	Relocate 1 ICOM class
Courtin	ICOM	William's Parkway	Courtin	ICOM	Balmoral Dr.	Relocate
Haarmann	JCOM	Terry Fox	Mason	JCOM	Sir Wilfrid Laurier	Relocate
Uniac	ICOM (2)	Allan Dr. M.S.	Mason	P/JCOM (1) Gr. 2,3,4,	Sir Wilfrid Laurier	Convert and relocate 1 class

## SECONDARY PROGRAMS

### Secondary Learning Support Program (LS 1, LS 2) Teacher Full Time Equivalent (FTE)

Superintendent	School	Allocation 2012-2013 FTE	Allocation 2013-2014 FTE
Bent	John Fraser	1.33	1.33
	Stephen Lewis	1.50	1.33
Courtin	Bramalea	2.33	1.83
	North Park	1.83	1.83
	Chinguacousy	1.83	1.67
Daws	Lincoln M. Alexander	1.67	1.50
	Castlebrooke	1.00	1.83
deFreitas	Brampton Centennial	2.50	1.83
	David Suzuki	2.17	3.00
Dowling	Erindale	2.50	2.17
	Clarkson	2.17	1.83
	Lorne Park	1.67	1.83
Edwards	Cawthra Park	2.00	2.17
	Port Credit	2.33	2.33
	T.L. Kennedy	1.17	1.00
Fournier	Applewood Heights	1.50	1.33
	Glenforest	1.33	1.33
	Gordon Graydon	0.67	0.50
Uniac	Harold M. Brathwaite	1.67	1.50
	Humberview	4.00	3.17
	Mayfield	2.67	2.67
Haarmann	Fletcher's Meadow	2.67	2.17
	Heart Lake	2.83	2.50
Mason	Central Peel	2.00	1.83
	Turner Fenton	1.67	1.67
	Judith Nyman	-	-
Noble	Sandalwood Heights	2.33	2.17
	Louise Arbour	2.17	2.33
Speers	Mississauga	2.33	2.17
	Rick Hansen	2.33	2.17
	Woodlands	1.33	1.33
Grewal	Meadowvale	3.17	3.50
	Streetsville	1.33	1.33
	West Credit	-	0.67
<b>TOTAL</b>		<b>64.00</b>	<b>61.83</b>



**Secondary In School Support (ZIS)/ Contact (CON)  
Teacher Full Time Equivalent (FTE)**

<b>Superintendent</b>	<b>School</b>	<b>Allocation 2012-2013 FTE</b>	<b>Allocation 2013-2014 FTE</b>
Bent	John Fraser	1.50	1.50
	Stephen Lewis	1.50	1.50
Courtin	Bramalea	1.50	1.50
	North Park	1.50	1.50
	Chinguacousy	1.67	1.50
Daws	Lincoln M. Alexander	2.67	2.67
	Castlebrooke	1.67	1.50
deFreitas	Brampton Centennial	1.67	1.67
	David Suzuki	1.50	1.50
Dowling	Erindale	1.83	1.83
	Clarkson	1.50	1.50
	Lorne Park	2.17	2.00
Edwards	Cawthra Park	1.50	1.50
	Port Credit	1.50	1.50
	T.L. Kennedy	2.00	1.50
Fournier	Applewood Heights	1.50	1.50
	Glenforest	1.83	1.83
	Gordon Graydon	2.83	2.50
Uniac	Harold M. Brathwaite	1.50	1.50
	Humberview	1.67	2.17
	Mayfield	1.67	1.67
Haarmann	Fletcher's Meadow	1.50	1.50
	Heart Lake	1.67	1.67
Mason	Central Peel	1.50	1.50
	Turner Fenton	2.67	3.00
	Judith Nyman	3.83	4.00
Noble	Sandalwood Heights	1.50	1.50
	Louise Arbour	2.00	2.00
Speers	Mississauga	1.50	1.50
	Rick Hansen	1.50	1.50
	Woodlands	2.67	2.67
Grewal	Meadowvale	1.50	1.50
	Streetsville	1.50	1.50
	West Credit	2.83	2.83
<b>TOTAL</b>		<b>62.83</b>	<b>62.50</b>

**Secondary Regional Communication Program  
Teacher Full Time Equivalent (FTE)**

<b>Superintendent</b>	<b>School</b>	<b>Allocation 2012-2013 FTE</b>	<b>Allocation 2013-2014 FTE</b>
Courtin	Chinguacousy	0.17	-
deFreitas	Brampton Centennial	2	2
Dowling	Erindale	2	2
Fournier	Gordon Graydon	0.67	0.50
Uniac	Mayfield	2	2
<b>TOTAL</b>		<b>6.84</b>	<b>6.50</b>

**Secondary Vocational Level 1 Program  
Teacher Full Time Equivalent (FTE)**

<b>Superintendent</b>	<b>School</b>	<b>Allocation 2012-2013 FTE</b>	<b>Allocation 2013-2014 FTE</b>
Daws	Lincoln M. Alexander	3.17	3.17
Fournier	Gordon Graydon	1.67	1.67
Mason	Turner Fenton Judith Nyman	3.33 10	3.33 10
Grewal	West Credit	7	7.17
Uniac	Humberview	-	0.67
<b>TOTAL</b>		<b>25.17</b>	<b>26</b>

**Secondary Itinerants  
Teacher Full Time Equivalent (FTE)**

<b>Superintendent</b>	<b>Allocation 2012-2013 FTE</b>	<b>Allocation 2013-2014 FTE</b>
Sirisko	8.0	8.0

**Secondary Programs for Students with Developmental Disabilities  
Classes**

<b>Superintendent</b>	<b>Location</b>	<b>Home School</b>	<b>Allocation 2012-2013 Classes</b>	<b>Allocation 2013-2014 Classes</b>
<b>Bent</b>	Applewood		14	14
	Applewood Heights	Applewood	1	1
	Clarkson	Applewood	1	1
	John Fraser	Applewood	1	1
	Meadowvale	Applewood	2	2
	Port Credit	Applewood	1	1
	Rick Hansen	Applewood	1	1
	The Woodlands	Applewood	1	1
	Stephen Lewis	Applewood	2	2
<b>Haarmann</b>	Parkholme		17	17
	Bramalea	Parkholme	1	1
	Brampton Centennial	Parkholme	1	1
	Central Peel	Parkholme	4	4
	Chinguacousy	Parkholme	1	1
	Heart Lake	Parkholme	1	1
	Mayfield	Parkholme	2	2
	North Park	Parkholme	1	1
	Sandalwood Heights	Parkholme	1	1
<b>Total Classes</b>			<b>53</b>	<b>53</b>

**Teacher Full Time Equivalent (FTE)**

<b>Superintendent</b>	<b>Location</b>	<b>Allocation 2012-2013 FTE</b>	<b>Allocation 2013-2014 FTE</b>
<b>Bent</b>	Applewood	32	32
<b>Haarmann</b>	Parkholme	39	39
<b>Total Teacher FTE</b>		<b>71</b>	<b>71</b>

**Secondary District Programs for Students with Developmental Disabilities (DDD)  
Teacher Full Time Equivalent (FTE)**

<b>Superintendent</b>	<b>Location</b>	<b>Allocation 2012-2013 FTE</b>	<b>Allocation 2013-2014 FTE</b>
<b>Edwards</b>	T.L. Kennedy	12.0	14.00
<b>Courtin</b>	Lincoln Alexander	1.67	1.67
<b>Total Teacher FTE</b>		<b>13.67</b>	<b>15.67</b>

**Secondary Resource Programs for Students with Developmental Disabilities (DD R)**

<b>Superintendent</b>	<b>Location</b>	<b>Allocation 2012-2013 FTE</b>	<b>Allocation 2013-2014 FTE</b>
<b>Uniac</b>	Harold M. Brathwaite	1.33	1.33
<b>Noble</b>	Louise Arbour	1.33	1.33
<b>Dowling</b>	Erindale	2.67	2.67
<b>Total Teacher FTE</b>		<b>5.33</b>	<b>5.33</b>

**Secondary School Enhanced Learning Centres (ELC)**

<b>Haarmann</b>	Heart Lake	Grade 9 – 12
<b>Uniac</b>	Humberview	Grade 9 – 12
<b>Speers</b>	Woodlands	Grade 9 – 12
<b>Fournier</b>	Glenforest	Grade 9 – 12
<b>Dowling</b>	Lorne Park	Grade 9 – 12

**Secondary Resource Program for Students with an ASD (ASD R)**

<b>Superintendent</b>	<b>School</b>	<b>Allocation 2012-2013 FTE</b>	<b>Allocation 2013-2014 FTE</b>
<b>Daws</b>	Lincoln M. Alexander	1.67	1.67
<b>Speers</b>	Mississauga	1.67	1.67
<b>Courtin</b>	North Park	1.67	1.67
	Chinguacousy	1.67	1.67
<b>Mason</b>	Turner Fenton	1.67	3.33
	Judith Nyman	2.67	2.67
<b>Fournier</b>	Gordon Graydon	3.33	3.33
<b>Grewal</b>	Streetsville	1.67	1.67
	West Credit	4.00	4.00
<b>Total Teacher FTE</b>		<b>20</b>	<b>21.68</b>

**Care and/or Treatment Program, Custody and Correctional Facility (Section 23)**

<b>Superintendent</b>	<b>Agency</b>	<b>School</b>	<b>2012-2013</b>	<b>2013-2014</b>
<b>Uniac</b>	TRE-ADD	H.M. Brathwaite	1	1
	Hanrahan	H.M. Brathwaite	1	1
	Wm. Osler Health Centre	Mayfield	3	3
<b>Courtin</b>	AYSP	Bramalea	1	1
	Cornerstone	North Park	1	1
	Spectrum	Chinguacousy	1	1
<b>Mason</b>	Full Circle	Central Peel	1	1
	Cuthbert House	Turner Fenton	1	1
<b>Fournier</b>	Peel Children's Centre	Glenforest	1	1
	Vanier Residence	Glenforest	1	1
<b>deFreitas</b>	MCYS-Youth Services	Roy McMurtry		
	Marjorie Amos House	Brampton	27	27
	AYSP	Centennial	1	1
		Brampton Centennial	1	1
<b>Grewal</b>	Alliance	West Credit	1	1
<b>Speers</b>	Johnson Children's Services	Rick Hansen	1	1
<b>Total Teacher FTE</b>			<b>43</b>	<b>43</b>

## **Projects 2012 – 2013**

- implementation of Open Minds Healthy Minds
- implementing the recommendations of the Gifted Review
- increasing system alignment to Ministry and Board Standards
- supporting all transitions of students with special needs
- building capacity of administrators to support students with special needs
- building capacity of all staff to support students with special needs
- implementing the recommendations of the Behaviour Review
- enhance communication standards for Special Education

## **Projects Planned for 2013 – 2014**

- implementation of Open Minds Healthy Minds
- implementing the recommendations of the Gifted Review
- increasing system alignment to Ministry and Board Standards
- supporting all transitions of students with special needs
- implementing PPM 156 and Transition Planning for Young People with Developmental Disabilities
- building capacity of administrators to support students with special needs
- building capacity of all staff to support students with special needs through networks and Professional Development
- enhance communication standards for Special Education by introducing a teacher newsletter
- implement the Intensive Support Model as part of the recommendations made in the Behaviour Review
- use resources effectively and efficiently

## Elementary Panel

Special Education Staff	FTE 2012-2013	FTE 2013-2014	Staff Qualifications
<b>1. Teachers of exceptional students</b>			
1.1 Teachers - regular classroom with resource or withdrawal support	389.1	389.1	OTQRC + Minimum Sp.Ed. Part I
1.2 Teachers- self-contained classes	239.5	249.0	OTQRC + Minimum Sp.Ed. Part I
1.3 Teachers for Care and/or Treatment Programs, Custody and Correctional Facilities	9	9	OTQRC
<b>1. Total</b>	<b>637.6</b>	<b>647.1</b>	

<b>2. Other special education staff</b>			
2.1 Itinerant teachers	46.5	46.5	ASD/SN-OTQRC + Minimum Sp.Ed. Part I Hard of Hearing - OTQRC + Minimum Part 1 Specialist in Deaf Education Visually Impaired - OTQRC + Minimum Part 1 in Blind/Low Vision Education Behaviour-OTQRC+ Minimum Sp.Ed. Part. 1
2.2 Teacher diagnosticians	0	0	
2.3 Coordinators	5	3	OTQRC + Sp.Ed. Specialist
Principal Coordinators	2	2	OTQRC + Sp.Ed. Specialist, Principal
2.4 Consultants and Special Education Resource Teachers	25.3	26.3	OTQRC + Sp.Ed. Specialist or equivalent
2.5 Care and/or Treatment Programs, Custody and Correctional Facilities Liaison	0.5	0.5	OTQRC + Sp.Ed. Specialist or equivalent
<b>2. Total</b>	<b>79.3</b>	<b>78.3</b>	

<b>3. Educational assistants in special education</b>			
3.1 Educational assistants	1026	1036.5	DSW, CYW, EA or equivalent

<b>4. Other professional resource staff (Elementary)</b>			
4.1 Psychologists (excluding chief, senior psychology associate and coordinator of behaviour programs)	30.1	30.1	Ph.D. or M.A. registered
4.2 Psychometrists	15.7	15.7	Ph.D. or M.A.
4.3 Psychiatrists	.025	0.025	M.D., A.B.A.P. Fee for Service
4.4 Speech-language pathologists (excluding chief)	50.0	48.0	Graduate degree in Speech and Language pathologist registered
4.5 Audiologists	0.6	0.6	Fee for service
4.6 Occupational therapists	0.25	0.25	Fee for service
4.7 Physiotherapists	0	0	
4.8 Social workers (excluding chief)	41.5	41.2	BSW or MSW-Registered
<b>4. Subtotal</b>	<b>138.18</b>	<b>135.88</b>	
<b>1 – 4 Total</b>	<b>1881.08</b>	<b>1897.78</b>	

<b>5.0 Paraprofessional resource staff</b>			
5.1 Orientation and mobility personnel	0.5	0.5	Fee for service
5.2 Oral interpreters (for deaf students)	0	0	
5.3 Sign interpreters (for deaf students)	0	0	
5.4 Transcribers (for blind students)	0.5	0.5	
5.5 Interveners (for deaf-blind students)	1.0	1.0	
5.6 Auditory-verbal therapists	0	0	
<b>5. Subtotal</b>	<b>2.0</b>	<b>2.0</b>	



## Secondary Panel

Special Education Staff	2012-2013 FTE	2013-2014 FTE	Staff Qualifications
<b>1. Teachers of exceptional students</b>			
1.1 Teachers for resource and regular classes (LS1/2, CON, ZIS, DDR)	132.16	129.66	OTQRC + Minimum Sp.Ed. Part I
1.2 Teachers for self-contained classes	109.84	112.67	OTQRC + Minimum Sp.Ed. Part I (or Head with Special Education qualifications)
1.3 Teachers for Partially Integrated classes (Comm., ASD R)	26.84	28.17	OTQRC + Minimum Sp. Ed. Part I (or Head with Special Education qualifications)
1.4 Teachers Care and/or Treatment Programs, Custody and Correctional Facilities	43	43	OTQRC
<b>1. Total</b>	<b>311.84</b>	<b>313.50</b>	

<b>2. Other special education staff</b>			
2.1 Itinerant teachers	8	8	ASD/SN-OTQRC + Minimum Sp.Ed. Part I <u>Deaf/Hard of Hearing</u> - OTQRC + Minimum Part 1 Specialist in Deaf Education <u>Blind/Low Vision</u> - OTQRC + Minimum Part 1 in Blind/Low Vision Education
2.2 Teacher diagnosticians	0	0	
2.3 Coordinators	4	3	OTQRC + Sp.Ed Specialist
2.4 Consultants and Resource Teachers (Special Education)	5.7	4.7	OTQRC + Sp.Ed Specialist
2.5 Care and/or Treatment Programs, Custody and Correctional Facilities Liaison	0.5	0.5	OTQRC + Sp.Ed Specialist
<b>2. Total</b>	<b>18.2</b>	<b>16.2</b>	

<b>3. Educational assistants in special education</b>			
3.1 Educational assistants	397.5	405	DSW, CYW, EA or equivalent

<b>4. Other professional resource (Secondary)</b>			
4.1 Psychologists (excluding chief, senior psychology associate and coordinator of behaviour programs)	9.3	8.3	Ph.D or M.A. Registered
4.2 Psychometrists	2.9	2.9	Ph. D or M.A.
4.3 Psychiatrists	0.05	0.05	M.D., A.B.A.P. Fee for Service
4.4 Speech-language pathologists (excluding chief)	3.0	3.0	Graduate degree in Speech and Language Pathologist registered
4.5 Audiologists	0.4	0.4	Fee for service
4.6 Occupational therapists	0.25	0.25	Fee for service
4.7 Physiotherapists	0	0	
4.8 Social workers	16.5	15.8	BSW or MSW-Registered
<b>4. Total</b>	<b>32.4</b>	<b>30.7</b>	
<b>1 – 4 Total</b>	<b>759.94</b>	<b>765.40</b>	

<b>5. Paraprofessional resource staff</b>			
5.1 Orientation and mobility personnel	0.5	0.5	Fee for service
5.2 Oral interpreters (for deaf students)	0	0	
5.3 Sign interpreters (for deaf students)	0	0	
5.4 Transcribers (for blind students)	0.5	0.5	
5.5 Interveners (for deaf-blind students)	0	0	
5.6 Auditory-verbal therapists	0	0	
<b>5. Total</b>	<b>1</b>	<b>1</b>	

## STAFF DEVELOPMENT

### **Purpose of the standard:**

To provide details of the board's professional development plans for special education staff for the ministry and to the public

### **What you will find in this section:**

- ways staff provide input for the plan and methods of determining priorities
- ways the board's SEAC is consulted about staff development
- Special Education Staff Development plan (courses, in-service training, and other types of professional development activities offered by the board)
- ways staff are trained with regard to the legislation and ministry policy on special education, with particular training for new teachers
- details of the board's budget allocation dedicated to the staff development plan in the area of special education
- ways school board staff are made aware of the board's special education plan and of professional development opportunities
- cost-sharing arrangements with other ministries or agencies for staff development

### **Ways in which the School Board's SEAC is consulted and informed about staff development:**

- Monthly meetings provide an opportunity for regular feedback to special education staff and sharing of current professional development opportunities
- Individual meetings and dialogues between SEAC members and administration
- Tracking of issues and concerns consistently raised at SEAC meetings
- Feedback from attendance at board-wide professional development sessions
- Capacity building of SEAC members in the form of presentations and collaborative discussion

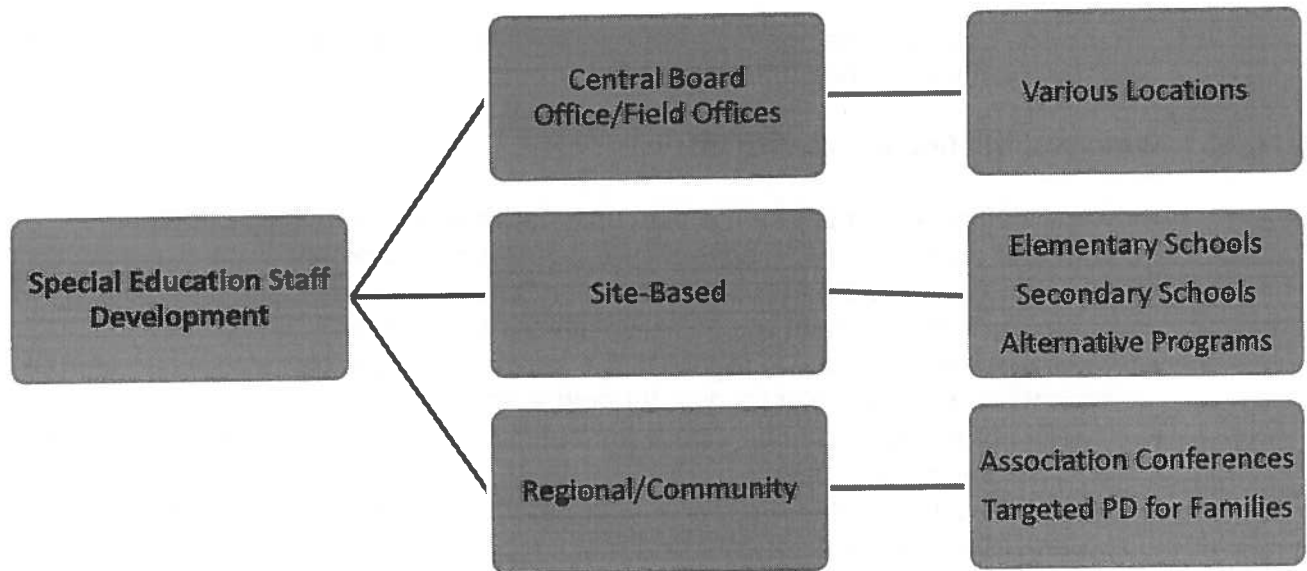
### **Special Education Staff Development Plan (courses, in-service training, etc):**

The board focus for professional development is developed by the Curriculum, Instruction, Special Education Support Services Department with a focus on literacy and numeracy

- Building capacity in teaching and learning through collaborative inquiry, equity and inclusive practices, 21<sup>st</sup> century learning and *Growing Success*
- The 4 pillars identified in the Board Improvement Plan (literacy, numeracy, pathways and community, culture and caring)

### **System Focus**

Focus is on the collaborative inquiry model through the Teaching-Learning Critical Pathways (TLCP) and the Professional Learning Cycle (PLC) emphasizing numeracy, literacy, pathways and community, culture and caring.



### **Ways in Which the School Board Staff are Made Aware of the Board's Special Education Plan and Staff Development Opportunities**

- My Learning Plan (and automatic upcoming events of interest)
- Digital newsletter sent out monthly (and posted on SESS website)
- system calendar
- administrator in-service
- flyers to schools
- special education teacher meetings
- Curriculum, Instruction, Special Education Support Services Learning Team meetings
- e-mails and memorandums
- monthly SEAC meetings
- weekly meetings of senior administration
- Peel District School Board website
- staff meetings
- CISESS advisory committee
- Educational Resource Facilitators website and newsletter
- links to webpages (Special Education Heads, SERTs/Secondary Resource Teachers-Special Education, ISSP, and Special Programs)
- Board Improvement Plan – work teams (literacy, numeracy, pathways, community culture and caring)

## STAFF DEVELOPMENT LEARNING OPPORTUNITIES

	Professional Development Topic
<b>July</b>	<ul style="list-style-type: none"> <li>• AODA Customer Services Training</li> </ul>
<b>August</b>	<ul style="list-style-type: none"> <li>• Summer Institute for new teachers</li> <li>• Training for teaching teams of students with ASD and DD in contained programs</li> <li>• One day training session for new and returning teachers, BTAs of elementary interval/contact programs</li> <li>• TEACCH training</li> <li>• New consultant in-service</li> <li>• Geneva Centre Summer Institute</li> <li>• Incorporating methods of ABA and transition planning in programs for students with special needs</li> <li>• Teacher training for Empower reading program</li> </ul>
<b>September</b>	<ul style="list-style-type: none"> <li>• Secondary teachers of Special Education- in-service</li> <li>• ISSP Teacher Institute</li> <li>• New Heads with Special Education Responsibilities- in-service</li> <li>• IEP training and ongoing support as required</li> <li>• In-service for critical incidents</li> <li>• In-service for itinerant, BTAs</li> <li>• De-escalation and personal safety trainers initial meeting</li> <li>• In-service for reporting child abuse</li> <li>• In-service for staff working with Developmental Disabilities and ASD (beginning of monthly network meetings)</li> <li>• SERT training for those new to position</li> <li>• In-service for Deaf and Hard of Hearing staff</li> <li>• In-service for staff working with Special Programs IPRC chairs</li> <li>• In-service for intermediate contact program teacher/BTA</li> <li>• De-escalation and personal safety training for staff in KSP, contained interval program, intermediate and secondary contact program</li> <li>• Psychology in-service at organizational meeting</li> <li>• Teaching Assistant modules</li> <li>• In-service for interval class teachers and BTAs</li> <li>• Learning for All and Growing Success workshops (ongoing)</li> <li>• Speech-Language in-service at organized meeting</li> <li>• Network for Teachers of DD classes</li> <li>• Incorporating methods of ABA and transition planning in programs for students with special needs</li> <li>• In-service for elementary/secondary Intensive Support teams</li> <li>• Tourette Syndrome National Conference</li> </ul>

<b>October</b>	<ul style="list-style-type: none"> <li>• IPRC Chairs training</li> <li>• Speech-Language Pathologist in service at organized meeting</li> <li>• DD network PD meeting</li> <li>• Social Work symposium</li> <li>• Teaching Assistant modules and workshops 4 half days</li> <li>• Speech-Language Pathologist Annual Conference</li> <li>• Incorporating methods of ABA and transition planning in programs for students with special needs</li> <li>• In-service for elementary/secondary Intensive Support teams</li> <li>• Applied Suicide Intervention Skills Training</li> </ul>
<b>November</b>	<ul style="list-style-type: none"> <li>• In-service for teachers of GLD classes</li> <li>• Transitions to Post Secondary – conference for students</li> <li>• In-service for administrators</li> <li>• De-escalation and personal safety trainers meeting</li> <li>• In-service seminar for secondary school educators</li> <li>• Teaching Assistant modules and workshops</li> <li>• SERT training in assistive technology</li> <li>• Network for teachers of DD classes</li> <li>• Speech-Language Pathology meeting</li> <li>• KIP regional planning and in-service meeting</li> <li>• Incorporating methods of ABA and transition planning in programs for students with special needs</li> <li>• In-service for interval class teachers and BTAs</li> <li>• In-service for elementary/secondary Intensive Support teams</li> <li>• Applied Suicide Intervention Skills Training</li> </ul>
<b>December</b>	<ul style="list-style-type: none"> <li>• Critical Incident In-service</li> <li>• Teaching Assistant modules/workshops</li> <li>• Transition workshops for grade 8 teachers: <i>Going From Grade 8 to Grade 9: What Supports are Available?</i></li> <li>• Incorporating methods of ABA and transition planning in programs for students with special needs</li> <li>• Applied Suicide Intervention Skills Training</li> </ul>
<b>January</b>	<ul style="list-style-type: none"> <li>• In-service- Assistive Technology for special needs accommodations for provincial assessments.</li> <li>• ISSP teacher in-service</li> <li>• Think Bowl information session</li> <li>• Network for teachers of DD classes</li> <li>• Annual Review training</li> <li>• Secondary contact teachers and BTA workshop</li> <li>• Intermediate contact teachers and BTA workshop</li> <li>• Secondary/Elementary Intensive Support team workshop</li> <li>• Incorporating methods of ABA and transition planning in programs for students with special needs</li> <li>• Applied Suicide Intervention Skills Training</li> </ul>

<b>February</b>	<ul style="list-style-type: none"> <li>• In-service for ISSP teachers</li> <li>• Information session CAS/group home personnel</li> <li>• Annual Review and Student Needs Assessment Form training for SERTs, Secondary Resource Teachers-Special Education and teachers</li> <li>• De-escalation and personal safety trainers meeting</li> <li>• Teaching Assistant workshops</li> <li>• Transition planning workshops for intermediate students with ASD</li> <li>• Network for teachers of DD classes</li> <li>• KSP teams planning and in-service</li> <li>• Incorporating methods of ABA and transition planning in programs for students with special needs</li> <li>• In-service for elementary/secondary Intensive Support teams</li> <li>• In-service for interval class teachers and BTAs</li> <li>• Applied Suicide Intervention Skills Training</li> </ul>
<b>March</b>	<ul style="list-style-type: none"> <li>• Critical incident In-service</li> <li>• Teaching Assistant modules and workshops</li> <li>• Incorporating methods of ABA and transition planning in programs for students with special needs</li> <li>• Applied Suicide Intervention Skills Training</li> </ul>
<b>April</b>	<ul style="list-style-type: none"> <li>• Parent literacy workshop</li> <li>• Annual Social Work Conference</li> <li>• Workshop on EPPP Examination</li> <li>• Psychology seminar for administrators – focussed discussion of risk in students</li> <li>• Network for Teachers of DD classes</li> <li>• Speech-Language Pathologist Spring Conference</li> <li>• Incorporating methods of ABA and transition planning in programs for students with special needs</li> <li>• In-service for interval class teachers and BTAs</li> <li>• In-service for elementary/secondary Intensive Support teams</li> <li>• Applied Suicide Intervention Skills Training</li> </ul>
<b>May</b>	<ul style="list-style-type: none"> <li>• Annual School Psychology Conference</li> <li>• Elementary Intensive Support team in-service</li> <li>• Intermediate Contact Program staff and Professional Student Services Personnel meetings</li> <li>• TA modules and workshops</li> <li>• De-escalation and personal safety trainers meeting</li> <li>• Incorporating methods of ABA and transition planning in programs for students with special needs</li> <li>• Leaders in Action</li> <li>• Applied Suicide Intervention Skills Training</li> </ul>

<b>June</b>	<ul style="list-style-type: none"> <li>• Annual Speech-Language Conference</li> <li>• Teaching Assistant modules and workshops</li> <li>• Secondary Contact Programs Workshop</li> <li>• Secondary/Elementary Intensive Support Team workshop</li> <li>• Incorporating methods of ABA and transition planning in programs for students with special needs</li> <li>• Applied Suicide Intervention Skills Training</li> </ul>
<b>Monthly</b>	<ul style="list-style-type: none"> <li>• Field Office School Success Team Meetings</li> <li>• Care and/or Treatment Programs, Custody and Correctional Facilities (Section 23) quarterly staff meetings</li> <li>• In-service at Care and/or Treatment Programs, Custody and Correctional Facilities (Section 23) host school sites to support school success planning</li> <li>• Speech-Language Pathologist staff meetings</li> <li>• Special Education department meetings and critical conversations</li> <li>• Social work staff meetings</li> <li>• Psychology staff meetings</li> <li>• Secondary Heads with Special Education responsibilities meetings</li> <li>• Consultant meetings</li> <li>• Secondary Resource Teachers-Special Education meetings</li> <li>• CISESS learning team meetings (once monthly)</li> <li>• Psychology Clinical Issues Meetings</li> <li>• ASD Resource team meetings</li> <li>• Itinerant staff meetings</li> <li>• Training session for Intensive Support team Case managers, BTAs, teachers (elementary and secondary)</li> <li>• Special Education Resource Teacher meetings</li> </ul>



<b>General Events</b>	<ul style="list-style-type: none"> <li>• <i>Learning for All</i> and <i>Growing Success</i>– sessions and TCLP/PLC</li> <li>• On-going support for ISSP and classroom teachers for In-School Enhanced Learning Program</li> <li>• Anti-bullying initiative</li> <li>• Staff development opportunities offered to Behaviour Teaching Assistants from psycho-educational consultants</li> <li>• Book and video talks</li> <li>• Positive school climate development</li> <li>• Training for the revised operating procedure for high risk students</li> <li>• Training for assistive technology and software applications</li> <li>• Incorporating assistive technology into the curriculum</li> <li>• Ongoing training offered to Board staff from Special Programs, ASD resource team</li> <li>• Collaborative interdepartmental (Special Education, Curriculum and Alternative) professional development inservicing professionals supporting students who are at risk</li> <li>• Bi-monthly inservice to reflect PDSB system priorities and policies/directions/initiatives by Ontario Ministry of Education Care and/or Treatment Programs, Custody and Correctional Facilities branch</li> <li>• PD for <i>Shared Solutions</i> and collaborative problem solving</li> <li>• On-going (at school request) de-escalation and personal safety training and/or specific behaviour crisis intervention training</li> <li>• On-going training of IPRC chairs</li> <li>• On-going staff development for Social Workers</li> <li>• On-going sessions for GLD teacher networks, with release time</li> <li>• FAST(Families and Schools Together) workshops</li> </ul>
-----------------------	---

<b>Cost Sharing Arrangements</b>
<p>Where feasible the board enters into agreements to facilitate staff development. A number of agencies and institutions have partnered with the board in this area. They include:</p> <ul style="list-style-type: none"> <li>• Trillium Health Centre</li> <li>• Geneva Centre for Autism</li> <li>• Peel Children's Centre</li> <li>• Ministry of Education – SEA</li> <li>• Ministry of Children and Youth Services</li> <li>• Success by 6</li> <li>• Ministry of Colleges and Universities</li> <li>• York University</li> <li>• Brock University</li> <li>• Sheridan College</li> <li>• Humber College</li> <li>• ErinoakKids</li> <li>• Kerry's Place</li> </ul>

## TRANSPORTATION

**Purpose of the Standard:**

To provide details of the board's transportation policies to the ministry and to the public.

**What you will find in this section:**

- description of the types of students with special needs who are eligible to receive transportation and the ways in which these students can access the transportation
- students in special education programs, including students who are in regular classrooms
- students in educational care and treatment, and correctional facilities
- students attending Provincial and Demonstration Schools
- students who require transportation in order to attend summer school programs
- process for deciding whether a student with special needs will be transported with other children or whether it is in the best interests of the student to be transported separately
- safety criteria used by the board in tendering and the selection of transportation providers for exceptional students

### Safety Criteria

Wheelchair Service	<ul style="list-style-type: none"> <li>• all vehicles used comply with Ministry of Transport regulations, including wheelchair securement processes and devices</li> <li>• drivers are specifically selected for this service based on experience, personality and driving record</li> </ul>
Driver Training	<p>All drivers have Accessibility for Ontarions with Disabilities Act (AODA) customer service training. The following outlines the training provided:</p> <ul style="list-style-type: none"> <li>• all drivers require a criminal record check</li> <li>• companies provide training on an individual needs basis to drivers transporting students with special needs</li> <li>• all companies train their drivers on the use of epi-pens</li> <li>• companies provide on going training throughout the school year in areas such as evacuation, student behaviour, etc.</li> </ul>

## Types of Students with Special Needs Eligible for Transportation and Access

Types of students/transportation	Ways to Access
Students in special education programs	<ul style="list-style-type: none"> <li>• Special Education Resource Teachers (SERTs) forward approved lists of students identified to special education programs to the Student Transportation Department</li> <li>• All identified students are considered eligible for transportation where the special class placement is in a school different from their home school and beyond the distance guidelines</li> <li>• A specific identified need may warrant transportation regardless of distance</li> </ul>
Students in mainstream placements	<ul style="list-style-type: none"> <li>• Consultants forward approved lists of students identified to special education programs to the Student Transportation Department</li> <li>• All identified students are considered eligible for transportation where the special class placement is in a school different from their home school and beyond the distance guidelines</li> <li>• A specific identified need may warrant transportation regardless of distance</li> </ul>
Students in educational care and treatment	<ul style="list-style-type: none"> <li>• Specific requirements and details regarding the student and service requirements are received from Care and/or Treatment Programs, Custody and Correctional Facilities co-ordinator</li> <li>• Service is provided utilizing either contracted mini van or taxis</li> <li>• Transportation to care and treatment facilities are maintained during the summer months for those students approved and designated as 12 month attendees</li> </ul>
Students attending Provincial and Demonstration Schools  E. C. Drury                      36 Trillium                              4 W. Ross MacDonald            11	<ul style="list-style-type: none"> <li>• Provincial Schools provide a list of students, from PDSB who are enrolled in the Provincial School</li> <li>• Transportation staff designs a segregated route system for both daily and weekly residential students</li> <li>• Communication is directly with parents regarding pick up and drop off times as well as necessary adjustments</li> <li>• Revisions to student data and new or deleted student information is received from the Provincial school on an ongoing basis throughout the school year</li> </ul>

<p>Students who require transportation in order to attend summer school programs</p>	<ul style="list-style-type: none"> <li>• No transportation service is provided for secondary students attending summer school</li> <li>• Elementary summer school (Grade 7 and 8) students are provided with bussing to the designated summer school site from the neighbourhood school</li> <li>• Centralized stops, located only at schools, are established for this service and route information is provided to all schools prior to the end of June</li> <li>• Students are required to get themselves to the centralized stops</li> <li>• Exceptions to this apply only in the case of students with physical disabilities or exceptional rural circumstances</li> </ul>
<ul style="list-style-type: none"> <li>• 20 passenger van</li> <li>• 5 passenger mini van</li> <li>• wheelchair accessible vehicle</li> <li>• taxi</li> <li>• regular school bus</li> </ul>	<ul style="list-style-type: none"> <li>• Decisions about type of vehicle are made collaboratively with the involvement of any or all of the following: <ul style="list-style-type: none"> <li>SERT/Consultant</li> <li>Co-ordinator</li> <li>School personnel</li> <li>Superintendent</li> <li>Transportation officers</li> </ul> </li> </ul>