



Peel District School Board

Special Education Programs and Services

2012-2013

**PEEL DISTRICT SCHOOL BOARD SPECIAL EDUCATION  
AMENDMENTS 2012-2013**

**Table of Contents**

A	The Board's Consultation Process		
	Summary of Consultation.....		3
	Summary of Programs and Services.....		3
	Summary of Special Education Teacher Allocations.....		4
	Summary of Teaching Assistant Allocation.....		7
	Professional Support Services .....		9
	Class Locations		
	Elementary.....		10
	Secondary.....		22
	Reviews Planned .....		29
	Projects Planned.....		29
B	Special Education Staff	Elementary Panel .....	30
		Secondary Panel.....	32
	Staff Development.....		34
	Transportation .....		41

## **A. Special Education Support Services**

### **Consultation Process**

Standards produced by the Ministry of Education for the development of a Special Education Plan include an expectation that stakeholders will be consulted with regards to programs and services offered annually.

System consultation was elicited through:

- SEAC meetings representing ten associations
- Review of staffing needs with superintendents, Special Education Resource Teachers, Secondary Resource Teachers-Special Education and Secondary Special Education Department heads with special education responsibilities

The goal of the consultation process was to understand concerns and garner suggestions from the different associations represented by SEAC.

The results of annual consultation and internal reviews are considered in the on-going work of the review of the full special education delivery model.

### **Summary of Special Education Programs and Services**

- Special education program teacher allocation
- Allocation of teaching assistants
- Professional support services
- Summary of special education programs by location-elementary
- Summary of special education programs by location-secondary

**SUMMARY OF ELEMENTARY SPECIAL EDUCATION PROGRAM TEACHER ALLOCATIONS**

<b>ELEMENTARY PROGRAMS CONTAINED</b>	<b>2011-2012 FTE</b>	<b>2012-2013 FTE</b>
Behaviour	14	14
Communication	60	62
Developmental Disabilities	22	21
Developmental Disabilities / Special Needs / ASD	15	16
Enhanced Learning	21	23
General Learning Disability	53	51
Hard of Hearing	4	4
Kindergarten Support Program	2.5	3.5
Kindergarten Transition Language Program	5	8
Primary Transition Program	8	8
Autism Spectrum Disorder	27	29
Care and/or Treatment Programs, Custody and Correctional Facilities	9	9
<b>TOTAL FTE</b>	<b>240.5</b>	<b>248.5</b>

**ELEMENTARY PROGRAMS NON-CONTAINED**

	<b>2011-2012 FTE</b>	<b>2012-2013 FTE</b>
In-School Support Program In-School Enhanced Learning Program	389.1	389.1
Intermediate Contact Program	20.0	20.0
<b>ITINERANT TEACHERS</b>		
ASD Resource Team	10	11
Hard of Hearing	12	13
Intermediate Contact Support	3	3
Mobile Behaviour Support Team	2	2
Special Needs	9.5	9.5
Visually Impaired	8	8
<b>TOTAL FTE</b>	<b>453.6</b>	<b>455.6</b>

**SUMMARY OF SECONDARY ALLOCATIONS - STAFF (FTE)**

<b>Secondary Programs</b>	<b>2011-2012 FTE</b>	<b>2012-2013 FTE</b>
Care and/or Treatment Program, Custody and Correctional Facility	45	43
Learning Support (LS1/LS2)	60	63
Programs for Students with Developmental Disabilities	70	71
District Programs for Students with Developmental Disabilities	11.67	13.67
Resource Programs for Students with Developmental Disabilities	5.33	5.33
Resource Program for Students with an Autism Spectrum Disorder	20	20
Vocational Level 1	29.67	26.83
Itinerant - Autism Spectrum Disorder, Hard of Hearing, Special Needs (ASD, HOH, SN)	5	6
Regional Communications Program for Students with a Learning Disability	8	6.84
In School Support and Behaviour/Contact	61.5	62.83
Itinerant Behaviour	2	2
<b>TOTAL FTE</b>	<b>318.17</b>	<b>320.50</b>

## TEACHING ASSISTANT ALLOCATIONS

<b>SPECIAL PROGRAMS ALLOCATIONS</b>	<b>ELEMENTARY</b>		<b>SECONDARY</b>	
	2011-12	2012-13	2011-12	2012-13
<b>SPECIAL EDUCATION FUNDING</b>				
Elementary Special Education Programs (GLD)	53	52.5	-	-
Integrated	569.5	567.5	68	68
Hard of Hearing Contained Programs	4	4	-	--
Regional Special Programs – ASD	78	84	88	94
Secondary Regional DD-Resource	-	--		
Regional Special Programs -- Developmental Disabilities and VOC 1	113	114.5	182	184
Secondary Regional Communication Programs	-	--	5	--
<b>TOTAL</b>	<b>817.5</b>	<b>822.5</b>	<b>343</b>	<b>346</b>
<b>BEHAVIOUR ALLOCATIONS</b>				
Elementary Contained Programs	19	189	-	-
School Based Elementary BTAs	157.5		-	-
Itinerants	3	3	16.5	5.5
Mobile Behaviour Services	8	8	8	8
Secondary Schools	-	-	33	36
K-12 Transitions Support	-	-	-	2.5
<b>TOTAL</b>	<b>187.5</b>	<b>200.0</b>	<b>57.5</b>	<b>51.0</b>

<b>TOTAL NUMBER OF TEACHING ASSISTANT ALLOCATIONS (excludes non-Special Education Funded TAs)</b>	
<b>2012-2013</b>	<b>1419.5</b>
<b>2011-2012</b>	<b>1405.5</b>
<b>2010-2011</b>	<b>1341.5</b>
<b>2009-2010</b>	<b>1237.5</b>

**TEACHING ASSISTANT ALLOCATIONS (non-Special Education Funded)**

<b>Additionally Funded TA Allocations</b>	<b>ELEMENTARY</b>		<b>SECONDARY</b>	
	2011-12	2012-13	2011-12	2012-13
Technical Assistance	3	3	-	-
<b>Government Grant Portion</b>				
Care and/or Treatment Programs, Custody and Correctional Facilities	7	6	9	10
Roy McMurtry			14	10
<b>TOTAL</b>	<b>10</b>	<b>9</b>	<b>23</b>	<b>20</b>



## **PROFESSIONAL SUPPORT SERVICES**

### **EDUCATIONAL SPEECH AND LANGUAGE PATHOLOGY SERVICES**

The primary aim of speech and language services is to improve a student's educational success by focusing on academic programming and communication in the classroom. To this end speech and language services provide a spectrum of integrated communication programs to support students who are communicatively challenged.

The services assist students whose language, speech, voice or hearing is delayed or disordered. Intervention is provided through assessments and individual, group and classroom programs as well as consultations with teachers, parents and community agencies. Workshops are available to parents and school staff.

<b>Speech-Language Pathologists</b> (does not include Chief Speech and Language Pathologist)	<b>2011-2012</b> <b>53.0*</b>	<b>2012-2013</b> <b>53.0*</b>
---	----------------------------------	----------------------------------

### **PSYCHOLOGICAL SERVICES**

Service for students with learning or behavioural needs range from individual psychoeducational assessment to consultation with teacher and teacher assistants regarding programming and behaviour management strategies. Psychoeducational Consultants provide counselling and liaison with community services.

<b>Psychoeducational Consultants</b> (does not include Chief Psychologist, Senior Psychologist, Coordinator of Behaviour Programs)	<b>2011-2012</b> <b>58.0*</b>	<b>2012-2013</b> <b>58.0*</b>
--	----------------------------------	----------------------------------

### **SCHOOL SOCIAL WORK SERVICES**

School Social Work Services are available to assist students whose attendance and/or social-emotional adjustment has been impacted by personal, social or family difficulties. Social workers assist schools in identifying and helping to correct those obstacles which interfere with students' ability to benefit from the educational opportunities available to them. School Social Work Services include assessment and counselling of students and parents, mandated attendance and Supervised Alternative Learning (SAL) responsibilities, crisis intervention, consultation, community liaison, Reaching Out and Learning to 18 initiatives.

<b>Social Workers</b> (does not include Chief Social Worker, Senior Social Worker)	<b>2011-2012</b> <b>58.0*</b>	<b>2012-2013</b> <b>58.0*</b>
--	----------------------------------	----------------------------------

\*Includes Alternative Programs, Hubs and Urban Funding

**CONTAINED CLASS LOCATIONS  
Enhanced Learning Classes (ELC)**

<b>Superintendent</b>	<b>School</b>	<b>Class</b>	<b>Allocation</b>	<b>Max Enrolment</b>
Bent	Middlebury	PELC	1	20
	Middlebury	JELC	1	23
Courtin	Balmoral Drive Sr.	IELC	1	25
	Greenbriar	IELC	2	50
Dowling	Thorn Lodge	JELC	1	23
	Homelands Sr.	IELC	3	75
Edwards	Camilla Road Sr.	IELC	2	50
Fournier	Silverthorn	P/JELC	1	23
Uniac	Caledon East	JELC	1	23
	Allan Drive Middle	IELC	1	25
	Caledon East	IELC	1	25
Haarmann	Somerset Drive	PELC	1	20
	Somerset Drive	JELC	1	23
	Robert H. Lagerquist Sr.	IELC	1	25
Mason	Helen Wilson	PELC	1	20
	Helen Wilson	JELC	1	23
	Sir John A. Macdonald	IELC	1	25
Grewal	Dolphin Sr.	IELC	2	50
<b>TOTAL</b>			<b>23</b>	<b>548</b>

**Contained Behaviour Classes  
(BEH), Primary Interval (PINT), Junior Interval (JINT)**

<b>Superintendent</b>	<b>School</b>	<b>Class</b>	<b>Allocation</b>	<b>Max Enrolment</b>
Bent	McKinnon	PINT	1	8
Courtin	Grenoble	PINT	1	8
	Jefferson	JINT	1	8
Daws	Marvin Heights	PINT	1	8
deFreitas	McHugh	PINT	1	8
Edwards	Munden Park	JINT	1	8
Fournier	Silverthorn	PINT	1	8
Uniac	Caledon East	JINT	1	8
Mason	Harold F. Loughin	PINT	1	8
	Arnott Charlton	JINT	1	8
	Kingswood Drive	JINT	1	8
Speers	Levi Creek	JINT	1	8
	McBride Avenue	JINT	1	8
Grewal	Miller's Grove	JINT	1	8
<b>TOTAL</b>			<b>14</b>	<b>112</b>

## Elementary Contained General Learning Disability Classes (GLD)

Superintendent	School	Class	Allocation	Max Enrolment
Bent	Castlebridge	PGLD	1	10
	Castlebridge	JGLD	1	14
	Erin Centre Middle	IGLD	1	14
Courtin	Eastbourne Drive	JGLD	1	14
	Balmoral Drive Sr.	IGLD	1	14
	Earncliffe Sr.	IGLD	1	14
	Greenbriar	IGLD	1	14
	Williams Parkway Sr.	IGLD	1	14
Daws	Brandon Gate	PGLD	1	10
	Brandon Gate	JGLD	1	14
	Beryl Ford	IGLD	1	14
	Calderstone Middle	IGLD	1	14
	Darcel Avenue Sr.	IGLD	1	14
deFreitas	McHugh	PGLD	1	10
	McHugh	JGLD	1	14
	Beatty Flemming Sr.	IGLD	1	14
	Centennial Sr.	IGLD	1	14
Dowling	Elmcrest	PGLD	1	10
	Elmcrest	JGLD	1	14
	Erin Mills Sr	IGLD	1	14
	Hillside Middle	IGLD	1	14
Edwards	Camilla Road Sr.	IGLD	1	14
	The Valleys Sr.	IGLD	1	14
Fournier	Barondale	PGLD	1	10
	Barondale	JGLD	1	14
	Bristol Road Middle	IGLD	1	14
	Glenhaven Sr.	IGLD	1	14
Uniac	Herb Campbell	IGLD	1	14
Haarmann	Burnt Elm	PGLD	1	10
	Esker Lake	PGLD	1	10
	Burnt Elm	JGLD	1	14
	Esker Lake	JGLD	1	14
	Cheyne Middle	IGLD	1	14
	McCrimmon Middle	IGLD	1	14
Mason	Sir Winston Churchill	JGLD	1	14
	Parkway	JGLD	1	14
	Gordon Graydon Sr.	IGLD	1	14
	Sir John A. Macdonald Sr.	IGLD	1	14

<b>Contained General Learning Disability Classes (GLD) cont'd</b>				
Noble	Robert J. Lee	PGLD	1	10
	Robert J. Lee	JGLD	1	14
	Treeline	JGLD	1	14
	Mountain Ash Middle	IGLD	1	14
	Treeline	IGLD	1	14
Speers	Queenston Drive	JGLD	1	14
	Fallingbrook	IGLD	2	28
	Queenston Drive	IGLD	1	14
Grewal	Ray Underhill	PGLD	1	10
	Ray Underhill	JGLD	1	14
	Lisgar Middle	IGLD	1	14
	Dolphin Sr.	IGLD	1	14
<b>TOTAL</b>			<b>51</b>	<b>678</b>

### Contained Communication Classes (COM)

Superintendent	School	Class	Allocation	Max Enrolment
Bent	McKinnon	JCOM	1	8
	Ruth Thompson Middle	ICOM	1	8
Courtin	Eastbourne Drive	JCOM	1	8
	Earncliffe Sr.	ICOM	1	8
	Williams Parkway Sr.	ICOM	1	8
Daws	Brandon Gate	P/JCOM	1	8
	Morning Star Middle	ICOM	2	16
deFreitas	Ridgeview	P/JCOM	1	8
	Ridgeview	JCOM	1	8
	Ingleborough	ICOM	2	16
	Royal Orchard Middle	ICOM	4	32
Dowling	Pheasant Run	PCOM	1	8
	Willow Glen	PCOM	1	8
	Willow Glen	P/JCOM	1	8
	Pheasant Run	JCOM	1	8
	Willow Glen	JCOM	1	8
	Erin Mills Sr	ICOM	2	16
	Hillcrest Middle	ICOM	3	24
Edwards	Clifton	PCOM	1	8
	Janet I. McDougald	PCOM	1	8
	Clifton	JCOM	1	8
	Janet I. McDougald	JCOM	1	8
Fournier	Cooksville Creek	PCOM	1	8
	Cooksville Creek	JCOM	1	8
	Bristol Road Middle	ICOM	2	16
Uniac	Great Lakes	P/JCOM	1	8
	Macville	PCOM	1	8
	Great Lakes	JCOM	1	8
	Macville	JCOM	1	8
	Allan Drive Middle	ICOM	2	16
	Great Lakes	ICOM	1	8
	Macville	ICOM	2	16
Haarmann	Conestoga	PCOM	1	8
	Esker Lake	PCOM	1	8
	Conestoga	JCOM	2	16
	Terry Fox	JCOM	1	8
	Robert H. Lagerquist Sr.	ICOM	1	8

### Contained Communication Classes (COM) (con't)

Mason	Gordon Graydon Sr.	ICOM	1	8
	Fletcher's Creek	ICOM	2	16
Noble	Treeline	JCOM	1	8
Speers	McBride Avenue	JCOM	1	8
Grewal	Plowman's Park	PCOM	2	16
	Plowman's Park	JCOM	2	16
	Willow Way	JCOM	1	8
	Dolphin Sr.	ICOM	2	16
	Edenwood Middle	ICOM	1	8
<b>TOTAL</b>			<b>62</b>	<b>496</b>

### Kindergarten Support Program (KSP)

Superintendent	School	Class	Allocation	Max Enrolment
deFreitas	Queen Street	KSP FDK	1	6
Dowling	Elmcrest	KSP FDK	1	6
Uniac	SouthFields Village	KSP FDK	1	6
Grewal	Trelawny	KSP	0.5	6
<b>TOTAL</b>			<b>3.5</b>	<b>24</b>

FDK – Full Day Kindergarten

### Kindergarten Transition Language Program (KTLC)

Superintendent	School	Class	Allocation	Max Enrolment
Edwards	Clifton	KTLC FDK	1	6
Fournier	Cooksville Creek	KTLC FDK	1	6
Uniac	Macville	KTLC FDK	1	6
Haarmann	Conestoga	KTLC FDK	2	12
Haarmann	Esker Lake	KTLC	1	12
Grewal	Plowman's Park	KTLC FDK	2	12
<b>TOTAL</b>			<b>8</b>	<b>54</b>

**Elementary Contained Developmental Disabilities (DD)  
 Developmental Disabilities/Special Needs (DD/SN)  
 Developmental Disabilities/Autism Spectrum Disorder (DD/ASD)**

<b>Superintendent</b>	<b>School</b>	<b>Class</b>	<b>Allocation</b>	<b>Max Enrolment</b>
Bent	Artesian Drive	P/JDD	1	10
	Ruth Thompson Middle	IDD	1	10
	Thomas Street Middle	IDD	1	10
	Erin Centre Middle	IDD/SN	1	6
Courtin	Balmoral Drive Sr.	IDD	1	10
	Greenbriar	IDD	1	10
	Goldcrest	P/JDD/ASD	1	6
	Williams Parkway Sr.	IDD/ASD	1	6
Daws	Claireville	P/JDD	1	10
	Beryl Ford	IDD	1	10
deFreitas	Huttonville	JDD	1	10
	Centennial Sr.	IDD	1	10
Dowling	Garthwood Park	P/JDD/SN	1	6
Edwards	Queen Elizabeth Sr.	IDD	1	10
	Briarwood	P/JDD/SN	1	6
Fournier	Champlain Trail	P/JDD	1	10
	Nahani Way	P/JDD	1	10
	Bristol Road Middle	IDD	1	10
	Fairwind Sr.	IDD	1	10
	Dixie	P/JDD/ASD	1	6
	Tomken Road Middle	IDD/ASD	1	6
Haarmann	Brisdale	PDD	1	10
	Cheyne Middle	IDD/SN	1	10
	Esker Lake	JDD/SN	1	6
	McCrimmon Middle	IDD/ASD	1	6
Mason	Gordon Graydon Sr.	IDD	1	10
	Sir Wilfrid Laurier	P/JDD/SN	1	6
	Sir Winston Churchill	IDD/SN	1	6
Noble	Robert J. Lee	P/JDD	1	10
	Carberry	P/JDD/ASD	1	6
	Lougheed Middle	IDD/ASD	1	6
	Lougheed Middle	IDD	1	10
Speers	Sherwood Mills	P/JDD/ASD	1	6
Grewal	Shelter Bay	P/JDD	1	10
	Hazel McCallion Sr.	IDD	1	10
	Hazel McCallion Sr.	IDD/ASD	1	6
	Lisgar Middle	IDD/ASD	1	6
<b>TOTAL</b>			<b>37</b>	<b>306</b>



**Regional Contained Special Programs,  
Communications Autism Spectrum Disorder (ASD)  
Primary Transition Program (PTP)**

<b>Superintendent</b>	<b>School</b>	<b>Class</b>	<b>Allocation</b>	<b>Max Enrolment</b>
Bent	Thomas Street Middle	IASD	1	8
	Castlebridge	P/JASD	1	6
	Middlebury	P/JASD	1	6
	Ruth Thompson Middle	IASD-R	1	8
	Castlebridge	PTP	1	6
Courtin	Williams Parkway Sr.	IASD	1	8
	Greenbriar	IASD-R	1	8
Daws	Red Willow	P/JASD	1	6
deFreitas	Royal Orchard Middle	IASD	1	8
Dowling	Sawmill Valley	P/JASD	1	6
	Thorn Lodge	P/JASD	1	6
	Homelands Sr.	IASD-R	1	8
	Tecumseh	IASD-R	1	8
	Sawmill Valley	PTP	1	6
Edwards	Janet I. McDougald	P/JASD	1	6
	Thornwood	P/JASD	1	6
	Camilla Road Sr.	IASD	1	8
Fournier	Tomken Road Middle	IASD	1	8
	Huntington Ridge	PTP	1	6
Haarmann	Burnt Elm	P/JASD	1	6
	Conestoga	P/JASD	1	6
	Terry Fox	P/JASD	1	6
	Robert H. Lagerquist Sr.	IASD-R	1	8
	Conestoga	PTP	1	6
	Esker Lake	PTP	1	6
Mason	Cherrytree	P/JASD	1	6
	Gordon Graydon Sr.	IASD	1	8
	Sir John A. Macdonald Sr.	IASD	1	8
	Helen Wilson	PTP	1	6
Noble	Mountain Ash Middle	IASD	1	8
	Robert J. Lee	P/JASD	1	6
Speers	David Leeder Middle	IASD-R	1	8
	Britannia	P/JASD	1	6
	Queenston Drive	IASD	1	8
	Britannia	PTP	1	6
	Derry West Village	PTP	1	6
Grewal	Hazel McCallion Sr.	IASD	1	8
<b>TOTAL</b>			<b>37</b>	<b>254</b>

### Hard of Hearing (HOH)

<b>Superintendent</b>	<b>School</b>	<b>Class</b>	<b>Allocation</b>	<b>Max Enrolment</b>
Fournier	Cooksville Creek	HOH	1	8
Uniac	Great Lakes	HOH	2	16
Mason	William G. Davis Sr.	HOH	1	8
<b>TOTAL</b>			<b>4</b>	<b>32</b>

### Care and/or Treatment Programs, Custody and Correctional Facilities (Section 23)

<b>Superintendent</b>	<b>School – Program</b>	<b>Class</b>	<b>Allocation</b>	<b>Max Enrolment</b>
Courtin	Fallingdale - TRE-ADD	SEC 23	1	6
deFreitas	Beatty Flemming - Spectrum	SEC 23	1	6
	Centennial - Spectrum	SEC 23	1	6
Fournier	Glenhaven - PCC	SEC 23	1	6
	Westacres - PCC	SEC 23	2	12
Mason	Hickory Wood - ErinoakKids	SEC 23	1	6
Speers	Edenrose - ErinoakKids	SEC 23	2	12
<b>TOTAL</b>			<b>9</b>	<b>54</b>

## Intermediate Contact Program (ICP)

<b>Superintendent</b>	<b>School</b>	<b>Allocation</b>
Bent	Erin Centre Middle	0.5
	Thomas Street Middle	0.5
	Ruth Thompson	0.5
Courtin	Balmoral	0.5
	Earncliffe Sr.	0.5
	Greenbriar	0.5
	Williams Parkway Sr.	0.5
Daws	Calderstone Middle	0.5
	Morning Star Middle	0.5
deFreitas	Centennial Sr.	0.5
	Royal Orchard Middle	0.5
	Sir William Gage Middle	0.5
	Beatty Flemming Sr.	0.5
Dowling	Hillcrest Middle	0.5
	Homelands Sr.	0.5
Edwards	Camilla Road Sr.	0.5
	Queen Elizabeth Sr.	0.5
	The Valleys Sr.	0.5
Fournier	Allan A. Martin Sr.	0.5
	Bristol Road Middle	0.5
	Fairwind Sr.	0.5
	Glenhaven Sr.	0.5
	Tomken Road Middle	0.5
Uniac	Allan Drive Middle	0.5
Haarmann	Cheyne	0.5
	McCrimmon Middle	0.5
	Robert H. Lagerquist Sr.	0.5
Mason	Fletcher's Creek Sr.	0.5
	Gordon Graydon Sr.	0.5
	Sir John A. Macdonald Sr.	0.5
	William G. Davis Sr.	0.5
Noble	Lougheed Middle	0.5
	Mountain Ash Middle	0.5
	Sunny View Middle	0.5
Speers	David Leeder Middle	0.5
	Fallingbrook Middle	0.5
Grewal	Dolphin Sr.	0.5
	Edenwood Middle	0.5
	Hazel McCallion Sr.	0.5
	Lisgar Middle	0.5
<b>TOTAL</b>		<b>20</b>

## In-School Enhanced Learning Program (ISELP) and In-School Support Program (ISSP)

<b>Superintendent</b>	<b>Allocation</b>
Bent	24.9
Courtin	30.3
Daws	31.6
deFreitas	37.3
Dowling	23.7
Edwards	28.5
Fournier	31.3
Uniac	21.8
Haarmann	31.2
Mason	27.6
Noble	42.3
Speers	30.1
Grewal	28.5
<b>TOTAL</b>	<b>389.1</b>

## Summary of Changes to Programs and Location Changes

		From			To	Change
<b>North Field Office</b>						
Haarmann	JELC	Conestoga	Mason	IELC	Sir John A. MacDonald	Re-locate Convert J to I
Uniac	J/I DD	Caledon Central	Haarmann	I DD/SN	Cheyne	Re-locate, Convert J/I to I
Uniac	PCOM	Great Lakes	Gingell	P/JCOM	Great Lakes	Convert P to P/J
Courtin	JCOM	Aloma	Mason	ICOM	Gordon Graydon	Re-locate, Convert J to I
Daws	JCOM	Brandon Gate	Daws	P/JCOM	Brandon Gate	Convert J to P/J
Daws	P/JDD	Red Willow	Daws	I DD	Beryl Ford	Re-Locate Convert P/J to I
deFreitas	IGLD	Royal Orchard	deFreitas	ICOM	Royal Orchard	Re-Allocate
deFreitas	KTLC	Westervelts	Haarmann	KTLC	Conestoga	Re-Locate Convert 1 to 2 FDK
deFreitas	PCOM	Westervelts	Haarmann	PCOM	Conestoga	Re-Locate
deFreitas	JCOM	Westervelts	Haarmann	JCOM	Conestoga	Re-Locate
deFrietas	JCOM	Homestead	Haarmann	JCOM	Conestoga	Re-Locate
Courtin	PGLD	R. D. Barber	Haarmann	PGLD	Esker Lake	Re-Locate
Courtin	JGLD	R. D. Barber	Haarmann	JGLD	Esker Lake	Re-Locate
Speers	ICOM	David Leeder	deFreitas	ICOM	Ingleborough	Re-Locate 2 classes
Daws	IGLD	Darcel	Daws	IGLD	Beryl Ford	Re-Locate
Noble	JINT	Springdale	Daws	PINT	Marvin Heights	Re-Locate Convert J to P
Courtin	Section 23	Massey	Mason	Section 23	Hickory Wood	Re-Locate
Mason				I ASD	Gordon Graydon	<b>New Program</b>
Uniac				KTLC	FDK Macville	<b>New Program</b>
Uniac				KSP	FDK South Fields Village	<b>New Program</b>
<b>South Field Office</b>						
Edwards	I DD	Riverside	Uniac	I DD/ASD	Lisgar	Re-Locate Convert-+ASD
Grewal	JGLD	Osprey Woods	Uniac	IGLD	Lisgar	Re-Locate Convert J to I
Fournier	JGLD	Cooksville Creek	Dowling	ICOM	Hillcrest	Re-Locate Re-Allocate
Grewal	JCOM	Willow Way	Speers	JCOM	McBride	Re-Locate
Speers	PELC	Edenrose	Bent	PELC	Middlebury	Re-Locate
Speers	JELC	Edenrose	Bent	JELC	Middlebury	Re-Locate
Fournier	JELC	Silverthorn	Fournier	P/JELC		Convert J to P/J
Dowling	JCOM	Willow Glen	Dowling	P/JCOM		Convert J to P/J
Courtin				IELC	Balmoral	<b>New Program</b>
Dowling				I ASD-R	Tecumseh	<b>New Program</b>
Fournier				KTLC	Cooksville Creek	<b>New Program</b>
Dowling				IELC	Homelands	<b>New Program</b>

**SECONDARY PROGRAMS****Secondary Learning Support Program LS 1, LS 2****Teacher Full Time Equivalent (FTE)**

<b>Superintendent</b>	<b>School</b>	<b>Allocation 2011-2012</b>	<b>Allocation 2012-2013</b>
Bent	John Fraser	1.50	1.33
	Stephen Lewis	1.50	1.50
Courtin	Bramalea	2.33	2.33
	North Park	1.67	1.83
	Chinguacousy	2.00	1.83
Daws	Lincoln M. Alexander	1.67	1.67
	Castlebrooke	0.00	1.00
deFreitas	Brampton Centennial	2.67	2.50
	David Suzuki	1.17	2.17
Dowling	Erindale	2.67	2.50
	Clarkson	2.17	2.17
	Lorne Park	2.00	1.67
Edwards	Cawthra Park	2.00	2.00
	Port Credit	2.33	2.33
	T.L. Kennedy	1.00	1.17
Fournier	Applewood Heights	1.50	1.50
	Glenforest	1.33	1.33
	Gordon Graydon	0.67	0.67
Uniac	Harold M. Brathwaite	1.67	1.67
	Humberview	2.67	3.00
	Mayfield	2.50	2.67
Haarmann	Fletcher's Meadow	2.50	2.67
	Heart Lake	2.83	2.83
Mason	Central Peel	2.00	2.00
	Turner Fenton	1.67	1.67
	Judith Nyman	0.00	0.00
Noble	Sandalwood Heights	2.33	2.33
	Louise Arbour	1.67	2.17
Speers	Mississauga	2.00	2.33
	Rick Hansen	2.33	2.33
	Woodlands	1.33	1.33
Grewal	Meadowvale	2.83	3.17
	Streetsville	1.50	1.33
	West Credit	0.00	0.00
<b>TOTAL</b>		<b>60.00</b>	<b>63.00</b>

**Secondary In School Support (ZIS)/ Contact (CON)  
Teacher Full Time Equivalent (FTE)**

<b>Superintendent</b>	<b>School</b>	<b>Allocation 2011-2012</b>	<b>Allocation 2012-2013</b>
Bent	John Fraser	1.50	1.50
	Stephen Lewis	1.50	1.50
Courtin	Bramalea	1.50	1.50
	North Park	1.67	1.50
	Chinguacousy	1.67	1.67
Daws	Lincoln M. Alexander	2.67	2.67
	Castlebrooke	0.00	1.67
deFreitas	Brampton Centennial	1.67	1.67
	David Suzuki	1.67	1.50
Dowling	Erindale	1.83	1.83
	Clarkson	1.50	1.50
	Lorne Park	2.17	2.17
Edwards	Cawthra Park	1.50	1.50
	Port Credit	1.50	1.50
	T.L. Kennedy	2.00	2.00
Fournier	Applewood Heights	1.50	1.50
	Glenforest	1.83	1.83
	Gordon Graydon	2.83	2.83
Uniac	Harold M. Brathwaite	1.50	1.50
	Humberview	1.67	1.67
	Mayfield	1.67	1.67
Haarmann	Fletcher's Meadow	1.50	1.50
	Heart Lake	1.67	1.67
Mason	Central Peel	1.50	1.50
	Turner Fenton	2.67	2.67
	Judith Nyman	3.83	3.83
Noble	Sandalwood Heights	1.50	1.50
	Louise Arbour	2.00	2.00
Speers	Mississauga	1.50	1.50
	Rick Hansen	1.50	1.50
	Woodlands	2.83	2.67
Grewal	Meadowvale	1.50	1.50
	Streetsville	1.50	1.50
	West Credit	3.17	2.83
<b>TOTAL</b>		<b>61.50</b>	<b>62.83</b>

### Secondary Regional Communication Program

Superintendent	School	Allocation 2011-2012	Allocation 2012-2013
Courtin	Chinguacousy	0.67	0.17
deFreitas	Brampton Centennial	2.00	2.0
Dowling	Erindale	2.00	2.0
Fournier	Gordon Graydon	1.33	0.67
Uniac	Mayfield	2.00	2.0
<b>TOTAL</b>		8.0	6.84

### Secondary Vocational Level 1 Program

Superintendent	School	Allocation 2011-2012	Allocation 2012-2013
Daws	Lincoln M. Alexander	2.83	3.67
Fournier	Gordon Graydon	2.50	1.67
Mason	Turner Fenton Judith Nyman	3.50 11.33	3.50 10.50
Grewal	West Credit	9.5	7.5
<b>TOTAL</b>		29.67	26.83

### Secondary Itinerants

Superintendent	Allocation 2011-2012	Allocation 2012-2013
Sirisko	7.0	8.0
<b>TOTAL</b>	7.0	8.0



**Secondary Programs for Students with Developmental Disabilities  
Class Locations**

<b>Superintendent</b>	<b>Location</b>	<b>Home School</b>	<b>Allocation 2012-2013 Classes</b>	<b>Allocation 2012-2013 Classes</b>
<b>Bent</b>	Applewood		14	14
	Applewood Heights	Applewood	1	1
	Clarkson	Applewood	1	1
	John Fraser	Applewood	1	1
	Meadowvale	Applewood	2	2
	Port Credit	Applewood	1	1
	Rick Hansen	Applewood	2	1
	The Woodlands	Applewood	1	1
	Stephen Lewis	Applewood	2	2
<b>Haarmann</b>	Parkholme		15	17
	Bramalea	Parkholme	1	1
	Brampton Centennial	Parkholme	1	1
	Central Peel	Parkholme	4	4
	Chinguacousy	Parkholme	1	1
	Heart Lake	Parkholme	1	1
	Mayfield	Parkholme	2	2
	North Park	Parkholme	1	1
	Sandalwood Heights	Parkholme	1	1
<b>Total Classes</b>			<b>52</b>	<b>53</b>

**Includes:**    - 1 class at Rick Hansen  
                      +2 classes at Parkholme

**Secondary Programs for Students with Developmental Disabilities  
Teacher Full Time Equivalent (FTE)**

<b>Superintendent</b>	<b>Location</b>	<b>Allocation 2011-2012 FTE</b>	<b>Allocation 2012-2013 FTE</b>
<b>Bent</b>	Applewood	34	32
<b>Haarmann</b>	Parkholme	36	39
<b>Total Teacher FTE</b>		<b>70</b>	<b>71</b>

**Secondary District Programs for Students with Developmental Disabilities**

<b>Superintendent</b>	<b>Location</b>	<b>Allocation 2011-2012 FTE</b>	<b>Allocation 2012-2013 FTE</b>
<b>Edwards</b>	T.L. Kennedy	10.00	12.00
<b>Courtin</b>	Lincoln Alexander	1.67	1.67
<b>Total Teacher FTE</b>		<b>11.67</b>	<b>13.67</b>

## Secondary Resource Programs for Students with Developmental Disabilities

<b>Superintendent</b>	<b>Location</b>	<b>Allocation 2011-2012 FTE</b>	<b>Allocation 2012-2013 FTE</b>
<b>Uniac</b>	Harold M. Brathwaite	1.33	1.33
<b>Noble</b>	Louise Arbour	1.33	1.33
<b>Dowling</b>	Erindale	2.67	2.67
<b>Total Teacher FTE</b>		<b>5.33</b>	<b>5.33</b>

## Secondary School Enhanced Learning Centres

<b>Haarmann</b>	Heart Lake	Grade 9 – 12
<b>Uniac</b>	Humberview	Grade 9 – 12
<b>Speers</b>	Woodlands	Grade 9 – 12
<b>Fournier</b>	Glenforest	Grade 9 – 12
<b>Dowling</b>	Lorne Park	Grade 9 – 12

## Secondary Resource Program for Students with an ASD

Superintendent	School	Allocation 2011-2012 FTE	Allocation 2012-2013 FTE
Daws	Lincoln M. Alexander	1.67	1.67
Speers	Mississauga	1.67	1.67
Courtin	North Park	1.67	1.67
	Chinguacousy	1.67	1.67
Mason	Turner Fenton	1.67	1.67
	Judith Nyman	2.67	2.67
Fournier	Gordon Graydon	3.33	3.33
Grewal	Streetsville	1.67	1.67
	West Credit	4.00	4.00
<b>Total Teacher FTE</b>		<b>20.00</b>	<b>20.00</b>

## Care and/or Treatment Program, Custody and Correctional Facility (Section 23)

Superintendent	Agency	School	2011-2012 FTE	2012-2013 FTE
Uniac	TRE-ADD	H.M. Brathwaite	1	1
	Hanrahan	H.M. Brathwaite	1	1
	Wm. Osler Health Centre	Mayfield	1	3
Courtin	AYSP	Bramalea	1	1
	Cornerstone	North Park	1	1
	Spectrum	Chinguacousy	1	1
Mason	Full Circle	Central Peel	1	1
	Cuthbert House	Turner Fenton	1	1
Fournier	Peel Children's Centre	Glenforest	1	1
	Vanier Residence	Glenforest	-	1
deFreitas	MCYS-Youth Services	Roy McMurtry	30	27
	Marjorie Amos House	Brampton Centennial	1	1
	AYSP	Brampton Centennial	1	1
Grewal	Alliance	West Credit	1	1
Speers	Johnson Children's Services	Rick Hansen	1	1
<b>Total Teacher FTE</b>			<b>45</b>	<b>43</b>

### **Projects Planned for 2011 - 2012**

- Inclusion Programs (Louise Arbour, Erindale, Harold M. Brathwaite, T. L. Kennedy)
- Transition Plans - Professional Development
- Supporting Seamless Transitions for Students with ASD from the Autism Spectrum Intervention Program to School

### **Projects Planned for 2012 - 2013**

- Implementation of Open Minds Healthy Minds
- Implementing the recommendations of the Gifted Review
- Increasing system alignment to Ministry and Board Standards
- Supporting all transitions of students with special needs
- Building capacity of administrators to support students with special needs
- Building capacity of all staff to support students with special needs
- Implementing the recommendations of the Behaviour Review
- Enhance communication standards for Special Education

## Elementary Panel

Special Education Staff	FTE 2011-2012	FTE 2012-2013	Staff Qualifications
<b>1. Teachers of exceptional students</b>			
1.1 Teachers - regular classroom with resource or withdrawal support	389.1	389.1	OTQRC + Minimum Sp.Ed. Part I
1.2 Teachers- self-contained classes	229.5	239.5	OTQRC + Minimum Sp.Ed. Part I
1.3 Teachers for Care and/or Treatment Programs, Custody and Correctional Facilities	9	9	OTQRC

<b>2. Other special education teachers</b>			
2.1 Itinerant teachers	44.5	46.5	<u>ASD/SN</u> -OTQRC + Minimum Sp.Ed. Part I <u>Hard of Hearing</u> - OTQRC + Minimum Part 1 Specialist in Deaf Education <u>Visually Impaired</u> - OTQRC + Minimum Part 1 in Blind/Low Vision Education <u>Behaviour</u> -OTQRC+ Minimum Sp.Ed. Part.1
SEA Project Lead	0.5	0	OTQRC + Minimum Sp.Ed. Part I
2.2 Teacher diagnosticians	0	0	
2.3 Coordinators	3.5	5	OTQRC + Sp.Ed. Specialist
Principal Coordinators	2	2	OTQRC + Sp.Ed. Specialist, Principal
2.4 Consultants and Special Education Resource Teachers	25	25.3	OTQRC + Sp.Ed. Specialist or equivalent
2.5 Care and/or Treatment Programs, Custody and Correctional Facilities Liaison	0.5	0.5	OTQRC + Sp.Ed. Specialist or equivalent

<b>3. Educational assistants in special education</b>			
3.1 Educational assistants	1015	1031.5	DSW, CYW, EA or equivalent

<b>4. Other professional resource staff (Elementary)</b>			
4.1 Psychologists (excluding chief, senior psychology associate and coordinator of behaviour programs)	33.1	30.1	Ph.D. or M.A. registered
4.2 Psychometrists	15.3	15.7	Ph.D. or M.A.
4.3 Psychiatrists	0.025	0.025	M.D., A.B.A.P. Fee for Service
4.4 Speech-language pathologists (excluding chief)	49.2	50.0	Graduate degree in Speech and Language pathologist registered
4.5 Audiologists	0.6	0.6	Fee for service
4.6 Occupational therapists	0.25	0.25	Fee for service
4.7 Physiotherapists	0	0	
4.8 Social workers (excluding chief)	41.5	41.5	BSW or MSW-Registered
<b>4.9 Subtotal</b>	<b>1858.58</b>	<b>1886.58</b>	

<b>5.0 Paraprofessional resource staff</b>				
5.1 Orientation and mobility personnel		0.5	0.5	Fee for service
5.2 Oral interpreters (for deaf students)		0	0	
5.3 Sign interpreters (for deaf students)		0	0	
5.4 Transcribers (for blind students)		0.5	0.5	
5.5 Interveners (for deaf-blind students)		1.0	1.0	
5.6 Auditory-verbal therapists		0	0	
<b>5.7 Subtotal</b>		<b>2.0</b>	<b>2.0</b>	

## Secondary Panel

Special Education Staff	FTE 2011-2012	FTE 2012-2013	Staff Qualifications
<b>1. Teachers of exceptional students</b>			
1.1 Teachers for resource and regular classes (LS1/2, CON, ZIS, DDR)	126.83	131.16	OTQRC + Minimum Sp.Ed. Part I
1.2 Teachers for self-contained classes	111.34	111.50	OTQRC + Minimum Sp.Ed. Part I (or Head with Special Education qualifications)
1.2 Teachers for Partially Integrated classes (Comm., R ASD)	28	26.84	OTQRC + Minimum Sp. Ed. Part I (or Head with Special Education qualifications)
1.3 Teachers Care and/or Treatment Programs, Custody and Correctional Facilities	45	43	OTQRC

<b>2. Other special education teachers</b>			
2.1 Itinerant teachers	7	8	<u>ASD/SN</u> -OTQRC + Minimum Sp.Ed. Part I <u>Deaf/Hard of Hearing</u> - OTQRC + Minimum Part 1 Specialist in Deaf Education <u>Blind/Low Vision</u> - OTQRC + Minimum Part 1 in Blind/Low Vision Education
SEA Project Lead	0.5	0	OTQRC + Minimum Sp.Ed. Part I
2.2 Teacher diagnosticians	0	0	
2.3 Coordinators	1.5	4.0	OTQRC + Sp.Ed Specialist
2.4 Consultants and Resource Teachers (Special Education)	5	5.7	OTQRC + Sp.Ed Specialist
2.5 Care and/or Treatment Programs, Custody and Correctional Facilities Liaison	0.5	0.5	OTQRC + Sp.Ed Specialist



### 3. Educational assistants in special education

3.1 Educational assistants	423.5	417	DSW, CYW, EA or equivalent
----------------------------	-------	-----	----------------------------

### 4. Other professional resource (Secondary)

4.1 Psychologists (excluding chief, senior psychology associate and coordinator of behaviour programs)	8.1	9.3	Ph.D or M.A. Registered
4.2 Psychometrists	3.5	2.9	Ph. D or M.A.
4.3 Psychiatrists	0.05	0.05	M.D., A.B.A.P. Fee for Service
4.4 Speech-language pathologists (excluding chief)	3.8	3.0	Graduate degree in Speech and Language Pathologist registered
4.5 Audiologists	0.4	0.4	Fee for service
4.6 Occupational therapists	0.25	0.25	Fee for service
4.7 Physiotherapists	0	0	
4.8 Social workers	16.5	16.5	BSW or MSW-Registered
<b>4.9 Subtotal</b>	<b>781.77</b>	<b>780.1</b>	

### 5. Paraprofessional resource staff

5.1 Orientation and mobility personnel	0.5	0.5	Fee for service
5.2 Oral interpreters (for deaf students)	0	0	
5.3 Sign interpreters (for deaf students)	0	0	
5.4 Transcribers (for blind students)	0.5	0.5	
5.5 Interveners (for deaf-blind students)	0	0	
5.6 Auditory-verbal therapists	0	0	
<b>5.7 Subtotal</b>	<b>1</b>	<b>1</b>	

## STAFF DEVELOPMENT

### **Purpose of the standard:**

To provide details of the board's professional development plans for special education staff for the ministry and to the public

### **What you will find in this section:**

- ways staff provide input for the plan and methods of determining priorities
- ways the board's SEAC is consulted about staff development
- Special Education Staff Development plan (courses, in-service training, and other types of professional development activities offered by the board)
- ways staff are trained with regard to the legislation and ministry policy on special education, with particular training for new teachers
- details of the board's budget allocation dedicated to the staff development plan in the area of special education
- ways school board staff are made aware of the board's special education plan and of professional development opportunities
- cost-sharing arrangements with other ministries or agencies for staff development

### **Ways in Which the School Board's SEAC is Consulted and Informed About Staff Development**

- monthly meetings provide an opportunity for regular feedback to special education staff and sharing of current professional development opportunities
- individual meetings and dialogues between SEAC members and administration
- tracking of issues and concerns consistently raised at SEAC meetings
- feedback from attendance at board wide professional development sessions.
- capacity building of SEAC members in the form of presentations, collaborative discussion

### **Special Education Staff Development Plan (courses, in-service training, etc.)**

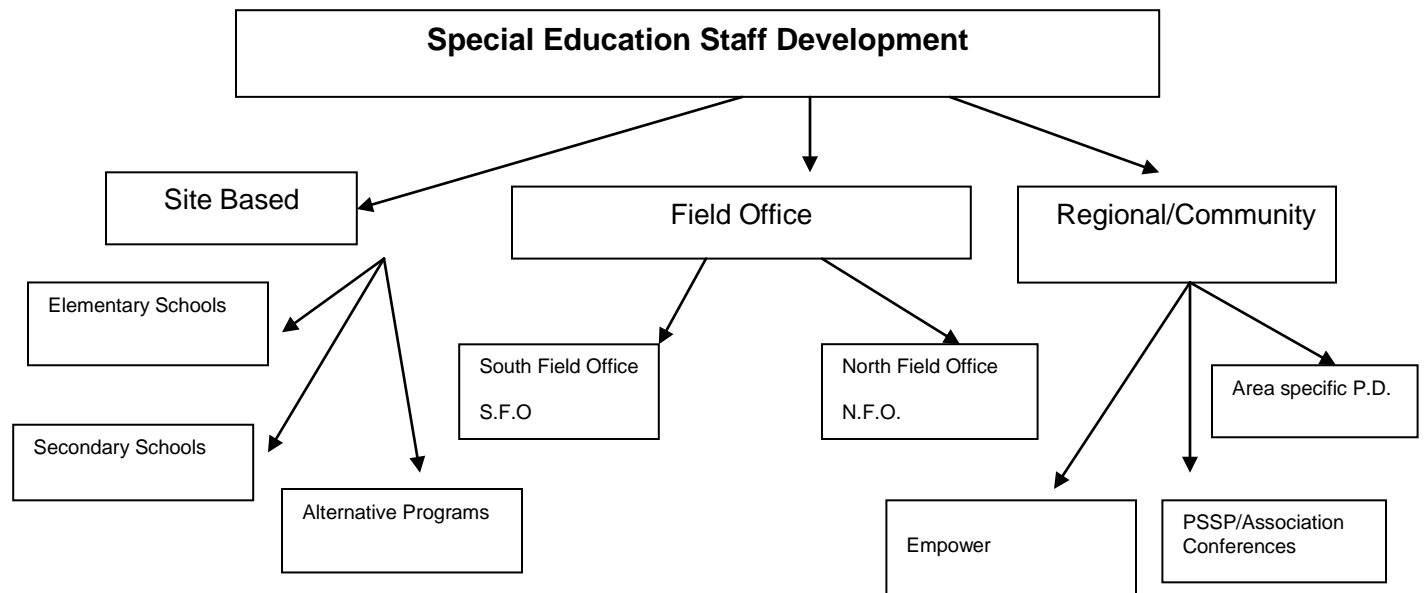
The board focus for professional development is developed by the Curriculum, Instruction, Special Education Support Services Department with a focus on literacy and numeracy.

- literacy and numeracy
- development of instructional strategies
- the 4 pillars identified in the Board Improvement Plan

In addition the Special Education Support Services department works closely with other departments in pursuing professional development. These departments include, Staff Development and School Support Services, Curriculum Instruction Support Services, Communication Support Services and Learning Technology Support Services.

### **System Focus**

Focus is on the Collaborative Inquiry Model through the Teaching - Learning Critical Pathway (TLCP) and the Professional Learning Cycle (PLC) emphasizing numeracy and literacy.



### **Ways in Which the School Board Staff are Made Aware of the Board's Special Education Plan and Staff Development Opportunities**

- My Learning Plan
- system calendar
- administrator in-service
- flyers to schools
- special education teacher meetings
- Curriculum, Instruction, Special Education Support Services Learning Team meetings
- e-mails and memorandums
- monthly SEAC meetings
- weekly meetings of senior administration
- Peel District School Board web site
- staff meetings
- CISESS advisory committee
- Educational Resource Facilitators website and newsletter
- links to Web page (Special Education Heads, SERTs/Secondary Resource Teachers-Special Education and Special Programs)
- Board Improvement Plan – work teams (Literacy, Numeracy, Pathways, Community Culture and Caring)

## STAFF DEVELOPMENT LEARNING OPPORTUNITIES

	Professional Development Topic
July	<ul style="list-style-type: none"> <li>• AODA Customer Services Training</li> </ul>
August	<ul style="list-style-type: none"> <li>• Summer Institute for New Teachers</li> <li>• Training for teaching teams of students with ASD and DD in contained programs</li> <li>• One day training session for new and returning teachers, BTA's of elementary interval/contact programs</li> <li>• TEACCH Training</li> <li>• New consultant in-service</li> <li>• Geneva Centre Summer Institute</li> <li>• Incorporating methods of ABA and transition planning in programs for students with special needs</li> <li>• Teacher training for Empower reading program</li> </ul>
September	<ul style="list-style-type: none"> <li>• Secondary teachers of Special Education- in-service</li> <li>• ISSP Teacher Institute</li> <li>• New Heads with Special Education Responsibilities- in-service</li> <li>• IEP training and ongoing follow up as required</li> <li>• In-service for Critical Incident</li> <li>• In-service for itinerant, BTA's</li> <li>• De-escalation and personal safety trainers meetings</li> <li>• In-service for Reporting Child Abuse</li> <li>• In-service for staff working with Developmental Disabilities and ASD (beginning of monthly network meetings)</li> <li>• SERT training for those new to position</li> <li>• In-service for Deaf and Hard of Hearing</li> <li>• In-service for staff working with Special Programs IPRC chairs</li> <li>• In-service for intermediate contact program teacher/BTA</li> <li>• De-escalation and Personal Safety training for staff in KSP, contained interval program, intermediate and secondary contact program</li> <li>• Psychology In-service at Organizational Meeting</li> <li>• Teaching Assistant modules</li> <li>• In-service for interval class teachers and BTAs</li> <li>• Learning for All (ongoing)</li> <li>• Speech-Language in-service at organized meeting</li> <li>• Network for Teachers of DD classes</li> <li>• Incorporating methods of ABA and transition planning in programs for students with special needs</li> <li>• In-service for elementary/secondary mobile teams</li> </ul>

October	<ul style="list-style-type: none"> <li>• IPRC Chairs training</li> <li>• Speech-Language Pathologist in service at organized meeting</li> <li>• DD network PD meeting</li> <li>• Social Work Symposium</li> <li>• Teaching Assistant modules and workshops 4 half days</li> <li>• Speech-Language Pathologist Annual Conference</li> <li>• Incorporating methods of ABA and transition planning in programs for students with special needs</li> <li>• In-service for elementary/secondary mobile teams</li> <li>• Tourette Syndrome National Conference (Nova Scotia)</li> </ul>
November	<ul style="list-style-type: none"> <li>• Suicide Intervention Training</li> <li>• In-service for teachers of GLD classes</li> <li>• Transitions to Post Secondary – workshop for students</li> <li>• In-service for administrators</li> <li>• Psychological Assessment Tools</li> <li>• De-escalation and personal safety trainers meetings</li> <li>• In-service seminar for Secondary School Educators</li> <li>• Teaching Assistant Modules and Workshop</li> <li>• SERT training in assistive technology</li> <li>• Network for Teachers of DD classes</li> <li>• Speech-Language pathology Meeting</li> <li>• KIP regional planning and in-service meeting</li> <li>• Incorporating methods of ABA and transition planning in programs for students with special needs</li> <li>• In-service for interval class teachers and BTAs</li> <li>• In-service for elementary/secondary mobile teams</li> </ul>
December	<ul style="list-style-type: none"> <li>• Critical Incident In-service</li> <li>• Teaching Assistant modules/workshops</li> <li>• Transition workshops for grade 8 teachers: <i>Going From Grade 8 to Grade 9: What Supports are Available?</i></li> <li>• Incorporating methods of ABA and transition planning in programs for students with special needs</li> </ul>
January	<ul style="list-style-type: none"> <li>• In-service Assistive Technology for special needs accommodations for provincial assessments.</li> <li>• ISSP teacher in-service</li> <li>• Think Bowl information session</li> <li>• Network for teachers of DD classes</li> <li>• Case Studies/focussed discussion of risk in students</li> <li>• Annual Review training</li> <li>• Secondary contact teachers and BTA workshop</li> <li>• Intermediate contact teachers and BTA workshop</li> <li>• Secondary/Elementary mobile behaviour support team workshop</li> <li>• Incorporating methods of ABA and transition planning in programs for students with special needs</li> </ul>

February	<ul style="list-style-type: none"> <li>• In-service for ISSP teachers</li> <li>• Information session CAS/group home personnel</li> <li>• Annual review training for SERTs, Secondary Resource Teachers-Special Education and teachers</li> <li>• De-escalation and personal safety trainers meetings</li> <li>• Teaching Assistant workshops Transition Planning workshops for intermediate students with ASD</li> <li>• Network for Teachers of DD classes</li> <li>• KSP teams planning and in-service</li> <li>• Incorporating methods of ABA and transition planning in programs for students with special needs</li> <li>• In-service for elementary/secondary mobile teams</li> <li>• In-service for interval class teachers and BTAs</li> </ul>
March	<ul style="list-style-type: none"> <li>• Critical Incident In-service</li> <li>• Teaching Assistant modules and workshops</li> <li>• Incorporating methods of ABA and transition planning in programs for students with special needs</li> </ul>
April	<ul style="list-style-type: none"> <li>• Suicide Intervention Training</li> <li>• Parent Literacy Workshop (social skills)</li> <li>• Annual Social Work Conference</li> <li>• Workshop on EPPP Examination</li> <li>• Psychology Seminar for administrators – focussed discussion of Risk in Students</li> <li>• Network for Teachers of DD classes</li> <li>• Speech-Language Pathologist Spring Conference</li> <li>• Incorporating methods of ABA and transition planning in programs for students with special needs</li> <li>• In-service for interval class teachers and BTAs</li> <li>• In-service for elementary/secondary mobile teams</li> </ul>
May	<ul style="list-style-type: none"> <li>• Annual School Psychology Conference</li> <li>• Elementary behaviour mobile in-service</li> <li>• Intermediate Contact Program staff and Professional Student Services Personnel</li> <li>• TA modules and workshops</li> <li>• De-escalation and personal safety trainers meetings</li> <li>• Incorporating methods of ABA and transition planning in programs for students with special needs</li> <li>• Leaders in Action</li> </ul>

June	<ul style="list-style-type: none"> <li>• Annual Speech-Language Conference</li> <li>• Teaching Assistant modules and workshops</li> <li>• Secondary Contact Programs Workshop</li> <li>• Secondary/Elementary Mobile Behaviour Support Team workshop</li> <li>• Incorporating methods of ABA and transition planning in programs for students with special needs</li> </ul>
<b>Monthly</b>	<ul style="list-style-type: none"> <li>• Field Office School Success Team Meetings</li> <li>• Care and/or Treatment Programs, Custody and Correctional Facilities (Section 23) quarterly staff meetings</li> <li>• In-service at Care and/or Treatment Programs, Custody and Correctional Facilities (Section 23) host school sites to support school success planning</li> <li>• Speech-Language Pathologist staff meetings</li> <li>• Special Education Department Meetings</li> <li>• Social work staff meetings</li> <li>• Psychology staff meetings</li> <li>• Secondary Heads with Special Education responsibilities</li> <li>• Consultant meetings</li> <li>• Secondary Resource Teachers-Special Education meetings</li> <li>• CISESS Learning Team Meetings (once monthly)</li> <li>• Psychology Clinical Issues Meetings</li> <li>• ASD Resource Team meetings</li> <li>• Itinerant staff meetings</li> <li>• Training session for mobile behaviour support team, Case managers, BTAs, teachers (elementary and secondary)</li> <li>• Special Education Resource Teacher meetings</li> </ul>

<p><b>General Events</b></p>	<ul style="list-style-type: none"> <li>• Learning for All – sessions and projects</li> <li>• On-going support for ISSP and classroom teachers for In-School Enhanced Learning Program</li> <li>• Anti-bullying initiative</li> <li>• Staff development opportunities offered to Behaviour Teaching Assistants from psycho-educational consultants</li> <li>• Book and video talks</li> <li>• Positive school climate development</li> <li>• Training for the revised operating procedure for High Risk Students</li> <li>• Training for assistive technology and software applications</li> <li>• Incorporating assistive technology into the curriculum</li> <li>• Ongoing training offered to Board staff from Special Programs, ASD Resource Team</li> <li>• Collaborative interdepartmental (Special Education, Curriculum and Alternative) professional development inservicing professionals supporting students who are at risk</li> <li>• Bi monthly inservice to reflect PDSB system priorities and policies/directions/initiatives by Ontario Ministry of Education Care and/or Treatment Programs, Custody and Correctional Facilities branch</li> <li>• PD for Shared Solutions</li> <li>• On-going (at school request) de-escalation and personal safety training and/or specific behaviour crisis intervention training</li> <li>• On-going training of IPRC chairs</li> <li>• On-going staff development for Social Workers</li> <li>• On-going sessions for GLD teacher networks, with release time</li> <li>• FAST(Families and Schools Together) – 2 day training with release time</li> </ul>
------------------------------	--

<p><b>Cost Sharing Arrangements</b></p> <p>Where feasible the board enters into agreements to facilitate staff development. A number of agencies and institutions have partnered with the board in this area. They include:</p> <ul style="list-style-type: none"> <li>• Trillium Health Centre</li> <li>• Geneva Centre for Autism</li> <li>• Peel Children's Centre</li> <li>• Ministry of Education – SEA</li> <li>• Ministry of Children and Youth Services</li> <li>• Success by 6</li> <li>• Ministry of Colleges and Universities</li> <li>• York University</li> <li>• Brock University</li> <li>• Sheridan College</li> <li>• Humber College</li> <li>• ErinoakKids</li> <li>• Kerry's Place</li> </ul>
--



## TRANSPORTATION

**Purpose of the Standard:**

To provide details of the board's transportation policies to the ministry and to the public.

**What you will find in this section:**

- description of the types of students with special needs who are eligible to receive transportation and the ways in which these students can access the transportation
- students in special education programs, including students who are in regular classrooms
- students in educational care and treatment, and correctional facilities
- students attending Provincial and Demonstration Schools
- students who require transportation in order to attend summer school programs
- process for deciding whether a student with special needs will be transported with other children or whether it is in the best interests of the student to be transported separately
- safety criteria used by the board in tendering and the selection of transportation providers for exceptional students

### Safety Criteria

Wheelchair Service	<ul style="list-style-type: none"> <li>• all vehicles used comply with Ministry of Transport regulations, including wheelchair securement processes and devices</li> <li>• drivers are specifically selected for this service based on experience, personality and driving record</li> </ul>
Driver Training	<p>Each company trains their staff with respect to the transportation of students with special education needs. The following outlines the training provided:</p> <ul style="list-style-type: none"> <li>• all drivers require a criminal record check</li> <li>• companies provide training on an individual needs basis to drivers transporting students with special needs</li> <li>• all companies train their drivers on the use of epi-pens</li> <li>• companies provide on going training throughout the school year in areas such as evacuation, student behaviour, etc.</li> </ul>

## Types of Students with Special Needs Eligible for Transportation and Access

Types of students/transportation	Ways to Access
Students in special education programs	<ul style="list-style-type: none"> <li>• Special Education Resource Teachers (SERTs) forward approved lists of students identified to special education programs to the Student Transportation Department</li> <li>• All identified students are considered eligible for transportation where the special class placement is in a school different from their home school and beyond the distance guidelines</li> <li>• A specific identified need may warrant transportation regardless of distance</li> </ul>
Students in mainstream placements	<ul style="list-style-type: none"> <li>• Consultants forward approved lists of students identified to special education programs to the Student Transportation Department</li> <li>• All identified students are considered eligible for transportation where the special class placement is in a school different from their home school and beyond the distance guidelines</li> <li>• A specific identified need may warrant transportation regardless of distance</li> </ul>
Students in educational care and treatment	<ul style="list-style-type: none"> <li>• Specific requirements and details regarding the student and service requirements are received from Care and/or Treatment Programs, Custody and Correctional Facilities co-ordinator</li> <li>• Service is provided utilizing either contracted mini van or taxis</li> <li>• Transportation to care and treatment facilities are maintained during the summer months for those students approved and designated as 12 month attendees</li> </ul>
Students attending Provincial and Demonstration Schools  E. C. Drury                      36 Trillium                              4 W. Ross MacDonald        11	<ul style="list-style-type: none"> <li>• Provincial Schools provide a list of students, from PDSB who are enrolled in the Provincial School</li> <li>• Transportation staff designs a segregated route system for both daily and weekly residential students</li> <li>• Communication is directly with parents regarding pick up and drop off times as well as necessary adjustments</li> <li>• Revisions to student data and new or deleted student information is received from the Provincial school on an ongoing basis throughout the school year</li> </ul>
Students who require transportation in order to attend summer school programs	<ul style="list-style-type: none"> <li>• No transportation service is provided for secondary students attending summer school</li> <li>• Elementary summer school (Grade 7 and 8) students are provided with bussing to the designated summer school site from the</li> </ul>

	<p>neighbourhood school</p> <ul style="list-style-type: none"> <li>• Centralized stops, located only at schools, are established for this service and route information is provided to all schools prior to the end of June</li> <li>• Students are required to get themselves to the centralized stops</li> <li>• Exceptions to this apply only in the case of students with physical disabilities or exceptional rural circumstances</li> </ul>
<ul style="list-style-type: none"> <li>• 20 passenger van</li> <li>• 5 passenger mini van</li> <li>• wheelchair accessible vehicle</li> <li>• taxi</li> <li>• regular school bus</li> </ul>	<ul style="list-style-type: none"> <li>• Decisions about type of vehicle are made collaboratively with the involvement of any or all of the following: <ul style="list-style-type: none"> <li>SERT/Consultant</li> <li>Co-ordinator</li> <li>School personnel</li> <li>Superintendent</li> <li>Transportation officers</li> </ul> </li> </ul>