



Peel District School Board

Special Education Programs and Services

2011-2012

PEEL DISTRICT SCHOOL BOARD SPECIAL EDUCATION AMENDMENTS 2011-2012

Table of Contents

A	The Board's Consultation Process		
	Summary of Consultation	2010-2011.....	2
	Results of Internal and External Reviews	2010-2012.....	2
	Summary of Programs and Services	2011-2012.....	2
	Summary of Special Education Teacher Allocations.....		4
	Summary of Teaching Assistant Allocation.....		7
	Professional Support Services		9
	Class Locations		
	Elementary.....		10
	Secondary.....		22
	Reviews Planned		29
	Projects Planned.....		29
B	Special Education Staff	Elementary Panel	30
		Secondary Panel.....	32
	Staff Development.....		34
	Transportation		42

A. Special Education Support Services 2010-2011

Consultation Process

Standards produced by the Ministry of Education for the development of a Special Education Plan include an expectation that stakeholders will be consulted with regards to programs and services offered annually.

System consultation was elicited through:

- SEAC meetings representing ten associations
- Review of staffing needs with superintendents, Special Education Resource Teachers, Secondary Resource Teachers-Special Education and Secondary Special Education Department heads with special education responsibilities

The goal of the consultation process was to understand concerns and garner suggestions from the different associations represented by SEAC.

The results of annual consultation and internal reviews are considered in the on-going work of the review of the full special education delivery model.

Results of the Internal and External Reviews 2011 - 2012

- Enhanced Learning Programs and Services review has been completed. Work teams are reviewing the recommendations.
- The Behaviour Services Review is ongoing.

Summary of Special Education Programs and Services 2011-2012

- Special education program teacher allocation
- Allocation of teaching assistants
- Professional support services
- Summary of special education programs by location-elementary
- Summary of special education programs by location-secondary

SUMMARY OF SPECIAL EDUCATION PROGRAM TEACHER ALLOCATIONS

ELEMENTARY PROGRAMS CONTAINED	2010-2011 FTE	2011-2012 FTE
Behaviour	17	14
Communication	59	60
Developmental Disabilities	22	22
Developmental Disabilities / Special Needs / ASD	13	15
Enhanced Learning	22	21
General Learning Disability	54	53
Hard of Hearing	3	4
Kindergarten Support Program	2.5	2.5
Kindergarten Transition Language Program	4.5	5
Primary Transition Program	7	8
Autism Spectrum Disorder	28	27
Care and/or Treatment Programs, Custody and Correctional Facilities	10	9
TOTAL FTE	242.0	239.5

ELEMENTARY PROGRAMS NON-CONTAINED

	2010-2011 FTE	2011-2012 FTE
In-School Support Program In-School Enhanced Learning Program Intermediate Contact Program	387.3 13.5	389.1 20.0
ITINERANT TEACHERS ASD Resource Team Hard of Hearing Intermediate Contact Mobile Team (behaviour) Special Needs Visually Impaired	41.5	44.5
Total FTE	442.3	453.6

SUMMARY OF SECONDARY ALLOCATIONS - STAFF (FTE)

Secondary Programs	2010-2011 FTE	2011-2012 FTE
Care and/or Treatment Program, Custody and Correctional Facility	45.0	45.0
Learning Support (LS1/LS2)	60.17	60.0
Programs for Students with Developmental Disabilities	66.0	70.0
District Programs for Students with Developmental Disabilities	12.67	11.67
Resource Programs for Students with Developmental Disabilities	3.99	5.33
Resource Program for Students with an Autism Spectrum Disorder	17	20
Vocational Level 1	29.15	29.67
Itinerant - Autism Spectrum Disorder, Hard of Hearing, Special Needs (ASD, HOH, SN)	5.0	5
Regional Communications Program for Students with a Learning Disability	9.33	8
In School Support and Behaviour/Contact	60.17	61.5
Itinerant Behaviour	2	2
TOTAL FTE	310.48	318.17

TEACHING ASSISTANT ALLOCATIONS

SPECIAL PROGRAMS ALLOCATIONS	ELEMENTARY		SECONDARY	
	2010-11	2011-12	2010-11	2011-12
Elementary Special Education Programs (GLD)	54	53	-	-
Integrated	529	569.5	66.5	68
Hard of Hearing Contained Programs	3	4	-	
Regional Special Programs – ASD	78	78	47	52
Secondary Regional DD-Resource	-		35	36
Regional Special Programs -- Developmental Disabilities and Vocational 1	109	113	173	182
Secondary Regional Communication Programs	-		5	5
Technical Assistant	3	3	-	-
Care and/or Treatment Programs, Custody and Correctional Facilities	6	7	9	9
Roy McMurtry	-		14	14
TOTAL	782	827.5	349.5	366

TEACHING ASSISTANT ALLOCATIONS

BEHAVIOUR ALLOCATIONS	ELEMENTARY		SECONDARY	
	2010-2011	2011-2012	2010-2011	2011-2012
Elementary Contained Programs	22	19	-	-
School Based Elementary BTAs	155.5	157.5	-	-
Itinerants	-	3	16.5	16.5
Mobile Behaviour Services	8	8	8	8
Secondary Schools	-	-	32	33
TOTAL Behaviour	185.5	187.5	56.5	57.5

TOTAL NUMBER OF TEACHING ASSISTANT ALLOCATIONS	
2011-2012	1438.5
2010-2011	1373.5
2009-2010	1268.5
2008-2009 includes Roy McMurtry	1147 1161
2007-2008 Added in December 2007 - 25	1071 1096
2006-2007 Added in fall 2006 -15	1036 1051
2005-2006	1011
2004-2005	944.5

PROFESSIONAL SUPPORT SERVICES

EDUCATIONAL SPEECH AND LANGUAGE PATHOLOGY SERVICES

The primary aim of speech and language services is to improve a student's educational success by focusing on academic programming and communication in the classroom. To this end speech and language services provide a spectrum of integrated communication programs to support students who are communicatively challenged.

The services assist students whose language, speech, voice or hearing is delayed or disordered. Intervention is provided through assessments and individual, group and classroom programs as well as consultations with teachers, parents and community agencies. Workshops are available to parents and school staff.

Speech-Language Pathologists (does not include Chief Speech and Language Pathologist)	2010-2011 52.0*	2011-2012 53.0*
---	----------------------------------	----------------------------------

PSYCHOEDUCATIONAL SERVICES

Service for students with learning or behavioural needs range from individual psychoeducational assessment to consultation with teacher and teacher assistants regarding programming and behaviour management strategies. Psychoeducational Consultants also provide emergency counselling and liaison with community services.

Psychoeducational Consultants (does not include Chief Psychologist, Senior Psychology Associate, Coordinator of Behaviour Programs)	2010-2011 60.0*	2011-2012 60.0*
---	----------------------------------	----------------------------------

SCHOOL SOCIAL WORK SERVICES

School Social Work Services are available to assist students whose attendance and/or social-emotional adjustment has been impacted by personal, social or family difficulties. Social workers assist schools in identifying and helping to correct those obstacles which interfere with students' ability to benefit from the educational opportunities available to them. School Social Work Services include assessment and counselling of students and parents, mandated attendance and S.A.L.E.P. responsibilities, crisis intervention, consultation, community liaison, Reaching Out and Learning to 18 initiatives.

Social Workers (does not include Chief Social Worker)	2010-2011 57.0*	2011-2012 58.0*
---	----------------------------------	----------------------------------

*Includes Alternative Programs, Hubs and Urban Funding

ELEMENTARY CONTAINED CLASS LOCATIONS 2011-2012

Enhanced Learning Classes (ELC)

		Class	School	Allocation	Maximum Enrolment
NFO	Bent	IELC	Greenbriar	2	50
NFO	deFreitas				
NFO	Massey	JELC	Caledon East	1	23
		IELC	Caledon East	1	25
		IELC	Allan Drive	1	25
NFO	Haarmann	PELC	Somerset	1	20
		JELC	Somerset	1	23
		JELC	Conestoga	1	23
		IELC	R.H. Lagerquist	1	25
NFO	Mason	PELC	Helen Wilson	1	20
		JELC	Helen Wilson	1	23
MWFO	Miles	PELC	Edenrose	1	20
		JELC	Edenrose	1	23
		IELC	Dolphin	2	50
MWFO	Sirisko	JELC	Thorn Lodge	1	23
		IELC	Homelands	2	50
SFO	Fournier	JELC	Silverthorn	1	23
SFO	Dowling	IELC	Camilla	2	50
Total				21	496

Relocate
PELC Caledon East to PELC Somerset
Reallocate
JELC Thorn Lodge to ICOM Ruth Thompson

**Elementary Contained Behaviour Classes (BEH),
Primary Interval (PINT), Junior Interval (JINT)**

		Class	School	Allocation	Maximum Enrolment
NFO	Bent	PINT	Grenoble	1	8
		JINT	Jefferson	1	8
NFO	deFreitas	JINT	Levi Creek	1	8
		PINT	McHugh	1	8
NFO	Massey	JINT	Caledon East	1	8
NFO	Haarmann	JINT	Kingswood	1	8
NFO	Mason	PINT	H.F.Loughlin	1	8
		JINT	Arnott Charlton	1	8
		JINT	Springdale	1	8
MWFO	Miles	JINT	Miller's Grove	1	8
MWFO	Sirisko	PINT	McKinnon	1	8
		JINT	McBride	1	8
SFO	Fournier	PINT	Silverthorn	1	8
SFO	Dowling	JINT	Munden Park	1	8
Total				14	112

Relocate
JINT Springfield to JINT McBride
PINT Eastbourne to PINT Grenoble
Close – ICON Homelands, McCrimmon, Sir John A. Macdonald
See Intermediate Contact Program page for allocations to schools.

Elementary Contained General Learning Disability Classes (GLD)

		Class	School	Allocation	Maximum Enrolment
NFO	Bent	PGLD	Brandon Gate	1	10
		JGLD	Brandon Gate	1	14
		JGLD	Eastbourne	1	14
		IGLD	Calderstone	1	14
		IGLD	Darcel	2	28
		IGLD	Earnscliffe	1	14
		IGLD	Greenbriar	1	14
NFO	deFreitas	PGLD	McHugh	1	10
		JGLD	McHugh	1	14
		IGLD	Beatty Fleming	1	14
		IGLD	Centennial	1	14
NFO	Massey	PGLD	R. J. Lee	1	10
		JGLD	R. J. Lee	1	14
		JGLD	Treeline	1	14
		IGLD	Treeline	1	14
		IGLD	Herb Campbell	1	14
		IGLD	Mountain Ash	1	14
NFO	Haarmann	PGLD	Burnt Elm	1	10
		JGLD	Burnt Elm	1	14
		JGLD	Sir Winston Churchill	1	14
		IGLD	Cheyne	1	14
		IGLD	McCrimmon	1	14
		IGLD	Royal Orchard	1	14
		IGLD	Sir John A. Macdonald	1	14
NFO	Mason	PGLD	R. D. Barber	1	10
		JGLD	R. D. Barber	1	14
		JGLD	Parkway	1	14
		IGLD	Balmoral	1	14
		IGLD	Gordon Graydon Sr.	1	14
		IGLD	Williams Parkway	1	14
MWFO	Miles	PGLD	Ray Underhill	1	10
		JGLD	Ray Underhill	1	14
		JGLD	Osprey Wood	1	14
		IGLD	Dolphin	1	14
		IGLD	Fallingbrook	2	28
MWFO	Sirisko	PGLD	Castlebridge	1	10
		JGLD	Castlebridge	1	14
		JGLD	Queenston	1	14
		IGLD	Queenston	1	14
		IGLD	Erin Centre	1	14
		IGLD	Erin Mills	1	14

Continued

Elementary Contained General Learning Disability Classes (GLD) cont'd

SFO	Fournier	PGLD	Barondale	1	10
		JGLD	Barondale	1	14
		JGLD	Cooksville Creek	1	14
		IGLD	Bristol Road	1	14
		IGLD	Glenhaven	1	14
		IGLD	The Valleys	1	14
SFO	Dowling	PGLD	Elmcrest	1	10
		JGLD	Elmcrest	1	14
		IGLD	Camilla	1	14
		IGLD	Hillside	1	14
Total				53	706

Relocate
PGLD King's Masting to PGLD Castlebridge
JGLD Churchill Meadows to JGLD Castlebridge
JGLD Claireville to PGLD Brandon Gate
Reallocate
IGLD A.A. Martin to P/J DD/ASD Sherwood Mills

Elementary Contained Communication Classes (COM)

		Class	School	Allocation	Maximum Enrolment
NFO	Bent	JCOM	Eastbourne	1	8
		JCOM	Brandon Gate	1	8
		ICOM	Earnscliffe	1	8
		ICOM	Morning Star	2	16
NFO	deFreitas	P/JCOM	Ridgeview	1	8
		JCOM	Ridgeview	1	8
		ICOM	David Leeder	2	16
		ICOM	Fletcher's Creek	2	16
NFO	Massey	PCOM	Macville	1	8
		JCOM	Macville	1	8
		ICOM	Macville	2	16
		JCOM	Treeline	1	8
		ICOM	Allan Drive	2	16
NFO	Haarmann	PCOM	Esler Lake	1	8
		PCOM	Westervelts Corners	1	8
		JCOM	Westervelts Corners	1	8
		JCOM	Homestead	1	8
		JCOM	Terry Fox	1	8
		ICOM	Royal Orchard	3	24
		ICOM	R.H. Lagerquist	1	8
NFO	Mason	PCOM	Great Lakes	1	8
		JCOM	Aloma	1	8
		JCOM	Great Lakes	1	8
		ICOM	Great Lakes	1	8
		ICOM	Williams Parkway	1	8
MWFO	Miles	PCOM	Plowman's Park	2	16
		JCOM	Plowman's Park	2	16
		JCOM	Willow Way	2	16
		ICOM	Edenwood	1	8
		ICOM	Dolphin	2	16
MWFO	Sirisko	PCOM	Pheasant Run	1	8
		JCOM	Pheasant Run	1	8
		JCOM	McKinnon	1	8
		ICOM	Erin Mills	2	16
		ICOM	Ruth Thompson	1	8

Continued

Elementary Contained Communication Classes (COM) (con't)

SFO	Fournier	PCOM	Cooksville Creek	1	8
		JCOM	Cooksville Creek	1	8
		PCOM	Hartsdale	1	8
		JCOM	Hartsdale	1	8
		ICOM	Bristol Road	2	16
SFO	Dowling	PCOM	Willow Glen	1	8
		JCOM	Willow Glen	2	16
		PCOM	Clifton	1	8
		JCOM	Clifton	1	8
		ICOM	Hillcrest	2	16
Total				60	480

Relocate
PCOM Eastbourne to PCOM Esker Lake
PCOM Ridgeview to P/JCOM Ridgeview
ICOM Loughheed to ICOM Williams Parkway
JCOM Macville to ICOM Macville
Reallocate
JELC Thorn Lodge to ICOM Ruth Thompson

**Elementary Contained Developmental Disabilities (DD)
Developmental Disabilities/Special Needs (DD/SN)
Developmental Disabilities/Autism Spectrum Disorder (DD/ASD)**

		Class	School	Allocation	Maximum Enrolment
NFO	Bent	P/J DD	Claireville	1	10
		P/J DD	Red Willow	1	10
		P/J DD/ASD	Goldcrest	1	6
		I DD	Greenbriar	1	10
NFO	deFreitas	P/J DD	Huttonville	1	10
		I DD	Centennial	1	10
NFO	Massey	P/J DD	R. J. Lee	1	10
		J/I DD	Caledon Central	1	10
NFO	Haarmann	P/J DD/SN	Esker Lake	1	6
		P/J DD	Brisdale	1	10
		I DD/SN	Sir Winston Churchill	1	6
		I DD/ASD	McCrimmon	1	6
MWFO	Miles	P/J DD	Shelter Bay	1	10
		I DD	Hazel McCallion	1	10
		I DD/ASD	Hazel McCallion	1	6
		P/J DD/ASD	Sherwood Mills	1	6
NFO	Mason	P/J DD/SN	Sir Wilfred Laurier	1	6
		P/J DD/ASD	Carberry	1	6
		I DD	Balmoral	1	10
		I DD	Gordon Graydon	1	10
		I DD	Lougheed	1	10
		I DD/ASD	Lougheed	1	6
		I/DD/ASD	Williams Parkway	1	6
MWFO	Sirisko	P/J DD	Artesian	1	10
		I DD/SN	Erin Centre	1	6
		I DD	Ruth Thompson	1	10
		I DD	Thomas Street	1	10
SFO	Fournier	P/J DD	Nahani Way	1	10
		P/J DD	Champlain Trail	1	10
		P/J DD/SN	Briarwood	1	6
		P/JDD/ASD	Dixie	1	6
		I DD	Bristol Road	1	10
		I DD	Fairwind	1	10
		I DD/ASD	Tomken Rd	1	6
SFO	Dowling	P/J DD/SN	Garthwood	1	6
		I DD	Queen Elizabeth	1	10
		I DD	Riverside	1	10
Total				37	310

Reallocate
IGLD A. A. Martin to P/J DD/ASD Sherwood Mills

**Elementary Regional Contained Special Programs,
Communications Autism Spectrum Disorder (ASD) Primary Transition Program (PTP)**

		Class	School	Allocation	Enrolment
NFO	Bent	P/J ASD	Red Willow	1	6
		I/ASD-R	Greenbriar	1	8
NFO	deFreitas	PTP	Derry West	1	6
		P/J ASD	Cherry Tree	1	6
		I/ASD-R	David Leeder	1	8
NFO	Massey	P/J ASD	Robert J. Lee	1	6
		I/ASD	Mountain Ash	1	8
NFO	Haarmann	PTP	Esker Lake	1	6
		PTP	Conestoga	1	6
		P/J ASD	Burnt Elm	1	6
		P/J ASD	Conestoga	1	6
		P/J ASD	Terry Fox	1	6
		I/ASD	Sir John A. Macdonald	1	8
		I/ASD	Royal Orchard	1	8
		I/ASD-R	R.H. Lagerquist	1	8
MWFO	Miles	PTP	Britannia	1	6
		P/J ASD	Hazel McCallion	1	6
		I/ASD	Britannia	1	8
NFO	Mason	PTP	Helen Wilson	1	6
		I/ASD	Williams Parkway	1	8
MWFO	Sirisko	PTP	Castlebridge	1	6
		PTP	Sawmill Valley	1	6
		P/J ASD	Castlebridge	1	6
		P/J ASD	Middlebury	1	6
		P/J ASD	Sawmill Valley	1	6
		P/J ASD	Thorn Lodge	1	6
		I/ASD	Queenston	1	8
		I/ASD	Thomas Street	1	8
		I/ASD-R	Ruth Thompson	1	8
		I/ASD-R	Homelands	1	8
SFO	Fournier	PTP	Huntington Ridge	1	6
		P/J ASD	Hartsdale	1	6
		P/J ASD	Thornwood	1	6
		I/ASD	Tomken Road	1	8
SFO	Dowling	I/ASD	Camilla	1	8
Total		PTP		8	48
Total		ASD		27	184
Total		PTP + ASD		35	232
Reallocate					
P/J ASD Huntington Ridge to PTP Huntington Ridge					

**Elementary Kindergarten Transition Language Class (KTLC)
Kindergarten Support Program (KSP)**

		Class	School	Allocation	Maximum Enrolment
NFO	Bent				
NFO	deFreitas	KSP	Queen Street (full day learning)	1	6
NFO	Massey				
NFO	Haarmann	KTLC KTLC	Esker Lake Westervelts Corners	1 1	12 12
NFO	Mason				
MWFO	Miles	KSP KTLC	Trelawny Plowman's Park (full day learning)	0.5 2	6 12
MWFO	Sirisko				
SFO	Fournier				
SFO	Dowling	KSP	Elmcrest (full day learning)	1	6
		KTLC	Clifton (full day learning)	1	6
Total		KSP		2.5	18
Total		KTLC		5	42

Relocate
KTLC Eastbourne to KTLC Esker Lake
KTLC Clifton 0.5 to KTLC Clifton 1.0 (FDK)

Hard of Hearing (HOH)

		Class	School	Allocation	Maximum Enrolment
NFO	Bent				
NFO	deFreitas				
NFO	Massey				
NFO	Haarmann				
NFO	Mason	HOH	Great Lakes	2	16
		HOH	William G. Davis	1	8
MWFO	Miles				
MWFO	Sirisko				
SFO	Fournier	HOH	Cooksville Creek	1	8
SFO	Dowling				
Total				4	32

Care and/or Treatment Programs, Custody and Correctional Facilities (Section 23)

		Agency	School	Allocation	Maximum Enrolment
NFO	Bent	TRE-ADD	Fallingdale	1	6
NFO	deFreitas	Spectrum	Beatty-Fleming	1	6
		Spectrum	Centennial Sr.	1	6
NFO	Massey			0	0
NFO	Haarmann			0	0
NFO	Mason	ErinoakKids	Massey Street	1	6
MWFO	Miles	ErinoakKids	Edenrose	2	12
MWFO	Sirisko			0	0
SFO	Fournier	PCC	Glenhaven	1	6
		PCC	Westacres	2	12
SFO	Dowling				
Total				9	54
Relocate - Sir Winston Churchill class – Location TBA					

Intermediate Contact Program (ICP)

			School	Allocation
NFO	Bent	*	Calderstone	.5
		*	Greenbriar	.5
			Darcel Ave	.5
			Earnscliffe	.5
			Morning Star	.5
NFO	deFreitas		David Leeder	.5
			Centennial Senior	.5
			Fletcher's Creek	.5
		*	Sir William Gage	.5
NFO	Massey		Allan Drive	.5
			Mountain Ash	.5
			Sunny View	.5
NFO	Haarmann		Cheyne	.5
			McCrimmon	.5
			Robert H. Lagerquist	.5
		*	Royal Orchard	.5
		*	Sir John A. Macdonald	.5
NFO	Mason	*	Balmoral Drive	.5
		*	Gordon Graydon	.5
			Lougheed Middle	.5
			William G. Davis	.5
		*	Williams Parkway	.5
MWFO	Miles	*	Dolphin	.5
			Edenwood	.5
			Fallingbrook	.5
			Hazel McCallion	.5
			Lisgar Middle	.5
MWFO	Sirisko		Erin Centre Middle	.5
			Ruth Thompson Middle	.5
			Thomas Street	.5
		*	Homelands	.5
SFO	Fournier	*	A. A. Martin	.5
			Bristol Rd	.5
			Fairwind	.5
		*	Glenhaven	.5
		*	Tomken Road	.5
	The Valleys	.5		
SFO	Dowling	*	Camilla Road	.5
		*	Queen Elizabeth	.5
		*	Hillcrest	.5
Total				20.0
* The Behaviour Contact Program Phase 3 – additional programs				

In-School Enhances (ISELP) and In-School Support Program (ISSP)

NFO	Bent	48.5
NFO	deFreitas	45.8
NFO	Haarmann	48.3
NFO	Massey	47.3
NFO	Mason	41.2
MWFO	Miles	41.8
MWFO	Sirisko	42.7
SFO	Fournier	39.1
SFO	Dowling	34.4
TOTAL		389.1

SECONDARY PROGRAMS
Secondary Learning Support Program LS 1 LS 2
Teacher Full Time Equivalent (FTE)

Superintendent		School	Allocation 2010-2011 FTE	Allocation 2011-2012 FTE
NFO	Courtin	Bramalea	2.33	2.33
		Brampton Centennial	3.33	2.67
		Central Peel	2.33	2.00
		David Suzuki	-	1.17
		Lincoln Alexander	1.33	1.67
		Mississauga	2.17	2.00
		North Park	1.83	1.67
		Turner Fenton	1.17	1.67
NFO	Powidajko	Chinguacousy	1.83	2.00
		Fletchers Meadow	3.33	2.50
		Harold M. Brathwaite	2.00	1.67
		Heart Lake	3.17	2.83
		Humberview	2.67	2.67
		Mayfield	2.50	2.50
		Judith Nyman	-	-
		Sandalwood Heights	2.33	2.33
		Louise Arbour	1.17	1.67
MWFO	Speers	Erindale	2.83	2.67
		John Fraser	1.50	1.50
		Meadowvale	2.83	2.83
		Rick Hansen	2.33	2.33
		Stephen Lewis	1.50	1.50
		Streetsville	1.50	1.50
		West Credit	-	-
		Woodlands	1.33	1.33
SFO	Edwards	Applewood Heights	1.67	1.50
		Cawthra Park	1.83	2.00
		Clarkson	2.17	2.17
		Glenforest	1.17	1.33
		Gordon Graydon	0.67	0.67
		Lorne Park	1.67	2.00
		Port Credit	2.33	2.33
		T.L. Kennedy	1.33	1.00
Total Teacher FTE			60.17	60.00

**Secondary In School Support (ZIS)/ Contact (CON)
Teacher Full Time Equivalent (FTE)**

Superintendent		School	Allocation 2010-2011 FTE	Allocation 2011-2012 FTE
NFO	Courtin	Bramalea	1.50	1.50
		Brampton Centennial	1.67	1.67
		Central Peel	1.50	1.50
		David Suzuki	-	1.67
		Lincoln Alexander	2.67	2.67
		Mississauga	1.50	1.50
		North Park	1.67	1.67
		Turner Fenton	2.67	2.67
NFO	Powidajko	Chinguacousy	1.67	1.67
		Fletchers Meadow	1.50	1.50
		Harold M. Brathwaite	1.50	1.50
		Heart Lake	1.67	1.67
		Humberview	1.67	1.67
		Mayfield	1.67	1.67
		Judith Nyman	3.83	3.83
		Sandalwood Heights	1.50	1.50
		Louise Arbour	2.00	2.00
MWFO	Speers	Erindale	1.67	1.83
		John Fraser	1.50	1.50
		Meadowvale	1.50	1.50
		Rick Hansen	1.50	1.50
		Stephen Lewis	1.50	1.50
		Streetsville	1.50	1.50
		West Credit	3.17	3.17
		Woodlands	2.83	2.83
SFO	Edwards	Applewood Heights	1.50	1.50
		Cawthra Park	1.50	1.50
		Clarkson	1.50	1.50
		Glenforest	1.83	1.83
		Gordon Graydon	2.83	2.83
		Lorne Park	2.17	2.17
		Port Credit	1.50	1.50
		T. L. Kennedy	2.00	2.00
Total Teacher FTE			60.17	61.50

Secondary Regional Communication Program

Superintendent		School	Allocation	Allocation
			2010-2011 FTE	2011-2012 FTE
NFO	Courtin	Brampton Centennial	2.0	2.0
NFO	Powidajko	Chinguacousy	1.33	0.67
		Mayfield	2.0	2.0
MWFO	Speers	Erindale	2.0	2.0
SFO	Edwards	Gordon Graydon	2.0	1.33
TOTAL Teacher FTE			9.33	8.00

Secondary Vocational Level 1 Program

Superintendent		School	Positions from Special Education 2010-2011 FTE	Projected Total from Special Education 2011-2012 FTE
NFO	Courtin	Lincoln Alexander	2.83	2.83
NFO	Courtin	Turner Fenton	2.66	3.50
NFO	Powidajko	Judith Nyman	10.83	11.33
MWFO	Speers	West Credit	10.00	9.50
SFO	Edwards	Gordon Graydon	2.83	2.50
TOTAL Teacher FTE			29.15	29.67

Secondary Itinerants

Superintendent	Allocation	Allocation
	2010-2011 FTE	2011-2012 FTE
Krutila	7.0	7.0
Total Teacher FTE	7.0	7.0

Secondary Resource Program for Students with an ASD

Superintendent		School	Allocation	Allocation
			2010-2011 FTE	2011-2012 FTE
NFO	Courtin	Lincoln Alexander	1.67	1.67
		Mississauga	1.67	1.67
		North Park	1.67	1.67
		Turner Fenton	-	1.67
NFO	Powidajko	Chinguacousy	1.67	1.67
		Judith Nyman	2.67	2.67
MWFO	Speers	Streetsville	1.67	1.67
		West Credit	2.67	4.00
SFO	Edwards	Gordon Graydon	3.33	3.33
TOTAL Teacher FTE			17.00	20.00

**Secondary Programs for Students with Developmental Disabilities
Class Locations**

Superintendent	Location	Home School	Allocation 2010-2011 Classes	Allocation 2011-2012 Classes
Debra Krutila	Applewood		12	14
	Applewood Heights	Applewood	1	1
	Clarkson	Applewood	1	1
	John Fraser	Applewood	1	1
	Meadowvale	Applewood	1	2
	Port Credit	Applewood	1	1
	Rick Hansen	Applewood	2	2
	The Woodlands	Applewood	1	1
	Stephen Lewis	Applewood	2	2
Debra Krutila	Parkholme		15	15
	Bramalea	Parkholme	1	1
	Brampton Centennial	Parkholme	1	1
	Central Peel	Parkholme	4	4
	Chinguacousy	Parkholme	1	1
	Heart Lake	Parkholme	1	1
	Mayfield	Parkholme	2	2
	North Park	Parkholme	1	1
	Sandalwood Heights	Parkholme	1	1
Total Classes			49	52

**Secondary Programs for Students with Developmental Disabilities
Teacher Full Time Equivalent (FTE)**

Superintendent	Location	Allocation 2010-2011 FTE	Allocation 2011-2012 FTE
Krutila	Applewood	30	34
Krutila	Parkholme	36	36
Total Teacher FTE		66	70

Secondary District Programs for Students with Developmental Disabilities

Superintendent	Location	Allocation 2010-2011 FTE	Allocation 2011-2012 FTE
Edwards	T.L. Kennedy	11.00	10.00
Courtin	Lincoln Alexander	1.67	1.67
Total Teacher FTE		12.67	11.67

Secondary Resource Programs for Students with Developmental Disabilities

Superintendent	Location	Allocation 2010-2011 FTE	Allocation 2011-2012 FTE
Powodajko	Harold M. Brathwaite	1.33	1.33
	Louise Arbour	1.33	1.33
Speers	Erindale	1.33	2.67
Total Teacher FTE		3.99	5.33

Secondary School Enhanced Learning Centres

Superintendent		School	2010-2011	2011-2012
NFO	Powidajko	Heart Lake	Grade 9-12	Grade 9-12
		Humberview	Grade 9-12	Grade 9-12
MWFO	Speers	Woodlands	Grade 9-12	Grade 9-12
SFO	Edwards	Glenforest	Grade 9-12	Grade 9-12
		Lorne Park	Grade 9-12	Grade 9-12

Care and/or Treatment Program, Custody and Correctional Facility (Section 23)

Superintendent		Agency	School	2010-2012 FTE	2011-2012 FTE
NFO	Powidajko	TRE-ADD	H.M. Brathwaite	1	1
		Hanrahan	H.M. Brathwaite	1	1
		Spectrum	Chinguacousy	1	1
NFO	Courtin	AYS	Bramalea	1	1
		Cornerstone	North Park	1	1
		AYS	Brampton Centennial	1	1
		Marjorie Amos House	Brampton Centennial	1	1
		Full Circle	Central Peel	1	1
		Cuthbert House	Turner Fenton	1	1
		Wm. Osler Health Centre	Mayfield	3	3
		MCYS-Youth Justice	Roy McMurtry	30	30
SFO	Edwards	Peel Children's Centre	Glenforest	1	1
MWFO	Speers	Alliance	West Credit	1	1
		Johnson Children's Services	Rick Hansen	1	1
Total Teacher FTE				45	45

Reviews Planned for 2011 - 2012

- Behaviour Program Review

Projects Planned for 2011 - 2012

- Inclusion Programs (Louise Arbour, Erindale, Harold M. Brathwaite, T. L. Kennedy)
- Transition Plans - Professional Development
- Supporting Seamless Transitions for Students with ASD from the Autism Spectrum Intervention Program to School

Elementary Panel

Special Education Staff	FTE 2010-2011	FTE 2011-2012	Staff Qualifications
1. Teachers of exceptional students			
1.1 Teachers - regular classroom with resource or withdrawal support	387.3	389.1	OTQRC + Minimum Sp.Ed.Part I
1.2 Teachers- self-contained classes	232	229.5	OTQRC + Minimum Sp.Ed. Part I
1.3 Teachers for Care and/or Treatment Programs, Custody and Correctional Facilities	10	9	OTQRC
2. Other special education teachers			
2.1 Itinerant teachers	41.5	44.5	<u>ASD/SN</u> -OTQRC + Minimum Sp.Ed. Part I <u>Deaf/Hard of Hearing</u> - OTQRC + Minimum Part 1 Specialist in Deaf Education <u>Blind/Low Vision</u> - OTQRC + Minimum Part 1 in Blind/Low Vision Education <u>Behaviour</u> -OTQRC+ Minimum Sp.Ed.Part.1
SEA Project Lead	-	0.5	OTQRC + Minimum Sp.Ed. Part I
2.2 Teacher diagnosticians	0	0	
2.3 Coordinators	3.0	3.5	OTQRC + Sp.Ed. Specialist
Principal Coordinators	2	2	OTQRC + Sp.Ed. Specialist, Principal
2.4 Consultants and Special Education Resource Teachers	25	25	OTQRC + Sp.Ed. Specialist or equivalent
2.5 Care and/or Treatment Programs, Custody and Correctional Facilities Liaison	0.5	0.5	OTQRC + Sp.Ed. Specialist or equivalent

3. Educational assistants in special education

3.1 Educational assistants	967.5	1015	DSW, CYW, EA or equivalent
----------------------------	-------	------	----------------------------

4. Other professional resource staff (Elementary)

4.1 Psychologists (excluding chief, senior psychology associate and coordinator of behaviour programs)	33.1	33.1	Ph.D. or M.A. registered
4.2 Psychometrists	15.3	15.3	Ph.D. or M.A.
4.3 Psychiatrists	0.025	0.025	M.D., A.B.A.P. Fee for Service
4.4 Speech-language pathologists (excluding chief)	48.7	49.2	Graduate degree in Speech and Language pathologist registered
4.5 Audiologists	0.6	0.6	Fee for service
4.6 Occupational therapists	0.25	0.25	Fee for service
4.7 Physiotherapists	0	0	
4.8 Social workers (excluding chief)	41.0	41.5	BSW or MSW-Registered
4.9 Subtotal	1806.8	1858.58	
5.1 Orientation and mobility personnel	0.5	0.5	Fee for service
5.2 Oral interpreters (for deaf students)	0	0	
5.3 Sign interpreters (for deaf students)	0	0	
5.4 Transcribers (for blind students)	0.5	0.5	
5.5 Interveners (for deaf-blind students)	1.0	1.0	
5.6 Auditory-verbal therapists	0	0	
5.7 Subtotal	2.0	2.0	

Secondary Panel

Special Education Staff	FTE 2010-2011	FTE 2011-2012	Staff Qualifications
1. Teachers of exceptional students			
1.1 Teachers for resource and regular classes (LS1/2, CON, ZIS, DDR)	124.33	126.83	OTQRC + Minimum Sp.Ed. Part I
1.2 Teachers for self-contained classes	107.82	111.34	OTQRC + Minimum Sp.Ed. Part I (or Head with Special Education qualifications)
1.2 Teachers for Partially Integrated classes (Comm., R ASD)	26.33	28	OTQRC + Minimum Sp. Ed. Part I (or Head with Special Education qualifications)
1.3 Teachers Care and/or Treatment Programs, Custody and Correctional Facilities	45	45	OTQRC
2. Other special education teachers			
2.1 Itinerant teachers	7	7	<u>ASD/SN</u> -OTQRC + Minimum Sp.Ed. Part I <u>Deaf/Hard of Hearing</u> - OTQRC + Minimum Part 1 Specialist in Deaf Education <u>Blind/Low Vision</u> - OTQRC + Minimum Part 1 in Blind/Low Vision Education
SEA Project Lead	-	0.5	OTQRC + Minimum Sp.Ed. Part I
2.2 Teacher diagnosticians	0	0	
2.3 Coordinators	1	1.5	OTQRC + Sp.Ed Specialist
2.4 Consultants and Resource Teachers (Special Education)	5	5	OTQRC + Sp.Ed Specialist
2.5 Care and/or Treatment Programs, Custody and Correctional Facilities Liaison	0.5	0.5	OTQRC + Sp.Ed Specialist

3. Educational assistants in special education			
3.1 Educational assistants	406.0	423.5	DSW, CYW, EA or equivalent
4. Other professional resource (Secondary)			
4.1 Psychologists (excluding chief, senior psychology associate and coordinator of behaviour programs)	8.1	8.1	Ph.D or M.A. Registered
4.2 Psychometrists	3.5	3.5	Ph. D or M.A.
4.3 Psychiatrists	0.05	0.05	M.D., A.B.A.P. Fee for Service
4.4 Speech-language pathologists (excluding chief)	3.3	3.8	Graduate degree in Speech and Language Pathologist registered
4.5 Audiologists	0.4	0.4	Fee for service
4.6 Occupational therapists	0.25	0.25	Fee for service
4.7 Physiotherapists	0	0	
4.8 Social workers	16	16.5	BSW or MSW-Registered
4.9 Subtotal	754.58	781.77	
5. Paraprofessional resource staff			
5.1 Orientation and mobility personnel	0.5	0.5	Fee for service
5.2 Oral interpreters (for deaf students)	0	0	
5.3 Sign interpreters (for deaf students)	0	0	
5.4 Transcribers (for blind students)	0.5	0.5	
5.5 Interveners (for deaf-blind students)	0	0	
5.6 Auditory-verbal therapists	0	0	
5.7 Subtotal	1	1	

STAFF DEVELOPMENT

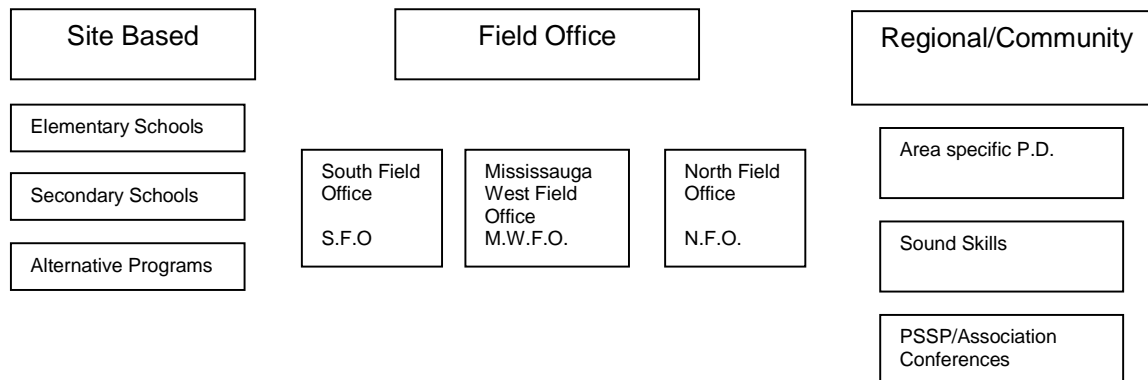
Purpose of the standard:

To provide details of the board's professional development plans for special education staff for the ministry and to the public

What you will find in this section:

- ways staff provide input for the plan and methods of determining priorities
- ways the board's SEAC is consulted about staff development
- Special Education Staff Development plan (courses, in-service training, and other types of professional development activities offered by the board)
- ways staff are trained with regard to the legislation and ministry policy on special education, with particular training for new teachers
- details of the board's budget allocation dedicated to the staff development plan in the area of special education
- ways school board staff are made aware of the board's special education plan and of professional development opportunities
- cost-sharing arrangements with other ministries or agencies for staff development

Special Education Staff Development



Ways in Which the School Board's SEAC is Consulted and Informed About Staff Development

- monthly meetings provide an opportunity for regular feedback to special education staff and sharing of current professional development opportunities
- individual meetings and dialogues between SEAC members and administration
- tracking of issues and concerns consistently raised at SEAC meetings
- feedback from attendance at board wide professional development sessions.

Special Education Staff Development Plan (courses, in-service training, etc.)

The board focus for professional development is developed by the Curriculum, Instruction, Special Education Support Services Department with a focus on literacy and numeracy.

- literacy and numeracy
- development of instructional strategies

In addition the Special Education Support Services department works closely with other departments in pursuing professional development. These departments include, Staff Development and School Support Services, Curriculum Instruction Support Services, Communication Support Services and Learning Technology Support Services.

System Focus

Focus is on the Collaborative Inquiry Model through the Teaching - Learning Critical Path (TLCP) and the Professional Learning Cycle (PLC) emphasizing numeracy and literacy.

Ways in Which the School Board Staff are Made Aware of the Board's Special Education Plan and Staff Development Opportunities

- My Learning Plan
- system calendar
- administrator in-service
- flyers to schools
- special education teacher meetings
- Curriculum, Instruction, Special Education Support Services Learning Team meetings
- e-mails and memorandums
- monthly SEAC meetings
- weekly meetings of senior administration
- Peel District School Board web site
- staff meetings
- CISESS advisory committee
- Educational Resource Facilitators website and newsletter
- links to Web page (Special Education Heads, SERTs/Secondary Resource Teachers-Special Education and Special Programs)
- Board Improvement Plan – work teams (Literacy, Numeracy, Pathways, Community Culture and Caring)

STAFF DEVELOPMENT LEARNING OPPORTUNITIES

2011 - 2012	Professional Development Topic
July	<ul style="list-style-type: none"> • AODA Customer Services Training
August	<ul style="list-style-type: none"> • Summer Institute for New Teachers • Training for teaching teams of students with ASD and DD in contained programs • One day training session for new and returning teachers, BTA's of elementary interval/contact programs • TEACCH Training • New consultant in-service • Geneva Centre Summer Institute • Incorporating methods of ABA and transition planning in programs for students with special needs
September	<ul style="list-style-type: none"> • Secondary teachers of Special Education- in-service • ISSP Teacher Institute • New Heads with Special Education Responsibilities- in-service • IEP training and ongoing follow up as required • In-service for Critical Incident • In-service for itinerant, BTA's • De-escalation and personal safety trainers meetings • In-service for Reporting Child Abuse • In-service for staff working with Developmental Disabilities and ASD (beginning of monthly network meetings) • SERT training for those new to position • In-service for Deaf and Hard of Hearing • In-service for staff working with Special Programs IPRC chairs • In-service for intermediate contact program teacher/BTA • De-escalation and Personal Safety training for staff in KSP, contained interval program, intermediate and secondary contact program • Psychology In-service at Organizational Meeting • Teaching Assistant modules • In-service for interval class teachers and BTAs • Learning for All (ongoing) • Speech-Language in-service at organized meeting • Network for Teachers of DD classes • Tourette Syndrome National Conference • Incorporating methods of ABA and transition planning in programs for students with special needs • In-service for elementary/secondary mobile teams
October	<ul style="list-style-type: none"> • IPRC Chairs meeting • In-service training for teachers of communication and enhanced learning classes

	<ul style="list-style-type: none"> • Speech-Language Pathologist in service at organized meeting • DD network PD meeting • Social Work Symposium • Teaching Assistant modules and workshops 4 half days • Speech-Language Pathologist Annual Conference • Incorporating methods of ABA and transition planning in programs for students with special needs • In-service for elementary/secondary mobile teams
November	<ul style="list-style-type: none"> • Suicide Intervention Training • In-service for teachers of GLD classes • Transitions to Post Secondary – workshop for students • In-service for administrators • Psychological Assessment Tools • De-escalation and personal safety trainers meetings • In-service seminar for Secondary School Educators • Teaching Assistant Modules and Workshop • SERT training in assistive technology • Network for Teachers of DD classes • Speech-Language pathology Meeting • KIP regional planning and in-service meeting • Incorporating methods of ABA and transition planning in programs for students with special needs • In-service for interval class teachers and BTAs • In-service for elementary/secondary mobile teams
December	<ul style="list-style-type: none"> • Critical Incident In-service • Teaching Assistant modules/workshops • Transition workshops for grade 8 teachers: <i>Going From Grade 8 to Grade 9: What Supports are Available?</i> • Incorporating methods of ABA and transition planning in programs for students with special needs
January	<ul style="list-style-type: none"> • In-service Assistive Technology for special needs accommodations for provincial assessments. • ISSP teacher in-service • Think Bowl information session • Network for teachers of DD classes • Case Studies/focussed discussion of risk in students • Annual Review training • Secondary contact teachers and BTA workshop • Intermediate contact teachers and BTA workshop • Secondary/Elementary mobile behaviour support team workshop • Incorporating methods of ABA and transition planning in programs for students with special needs

February	<ul style="list-style-type: none"> • ISSP Institutes • IEP in-service • Information session CAS/group home personnel • Annual review training for SERTs, Secondary Resource Teachers-Special Education and teachers • De-escalation and personal safety trainers meetings • Teaching Assistant workshops Transition Planning workshops for intermediate students with ASD • Network for Teachers of DD classes • KSP teams planning and in-service • Incorporating methods of ABA and transition planning in programs for students with special needs • In-service for elementary/secondary mobile teams • In-service for interval class teachers and BTAs
March	<ul style="list-style-type: none"> • Critical Incident In-service • Teaching Assistant modules and workshops • Incorporating methods of ABA and transition planning in programs for students with special needs
April	<ul style="list-style-type: none"> • Suicide Intervention Training • Parent Literacy Workshop (social skills) • Annual Social Work Conference • Workshop on EPPP Examination • Psychology Seminar for administrators – focussed discussion of Risk in Students • Network for Teachers of DD classes • Speech-Language Pathologist Spring Conference • Incorporating methods of ABA and transition planning in programs for students with special needs • In-service for interval class teachers and BTAs • In-service for elementary/secondary mobile teams
May	<ul style="list-style-type: none"> • Annual School Psychology Conference • Elementary behaviour mobile in-service • Intermediate Contact Program staff and Professional Student Services Personnel • TA modules and workshops • De-escalation and personal safety trainers meetings • Incorporating methods of ABA and transition planning in programs for students with special needs • Leaders in Action

June	<ul style="list-style-type: none"> • Annual Speech-Language Conference • Teaching Assistant modules and workshops • Secondary Contact Programs Workshop • Secondary/Elementary Mobile Behaviour Support Team workshop • Incorporating methods of ABA and transition planning in programs for students with special needs
Monthly	<ul style="list-style-type: none"> • Field Office School Success Team Meetings • Care and/or Treatment Programs, Custody and Correctional Facilities staff meetings • Speech-Language Pathologist staff meetings • Special Education Department Meetings • Social work staff meetings • Psychology staff meetings • Secondary Heads with Special Education responsibilities • Special Education Resource Teacher/Consultant meetings • Secondary Resource Teachers-Special Education meetings • CISESS Learning Team Meetings (once monthly) • Psychology Clinical Issues Meetings • ASD Resource Team meetings • Itinerant staff meetings • Training session for mobile behaviour support team, Case managers, BTAs, teachers (elementary and secondary) • In-service at Care and/or Treatment Programs, Custody and Correctional Facilities host school sites to support school success planning • Special Education Resource Teachers meetings

General Events

- Learning for All – Professional Learning Community implementation schools (Erin Center, Meadowvale Village, Glenforest Secondary School)
- Anti-bullying initiative
- Staff development opportunities offered to Behaviour Teaching Assistants from psycho-educational consultants
- Book and video talks
- Positive school climate development
- Training for the revised operating procedure for High Risk Students
- Training for assistive technology and software applications
- Incorporating assistive technology into the curriculum
- Ongoing training offered to Board staff from Special Programs, ASD Resource Team and Erinoak School Support Program
- Combined Consultants/SERTs meeting-twice yearly
- Collaborative interdepartmental (Special Education, Curriculum and Alternative) professional development inservicing professionals supporting students who are at risk
- Bi monthly inservice to reflect PDSB system priorities and policies/directions/initiatives by Ontario Ministry of Education Care and/or Treatment Programs, Custody and Correctional Facilities branch
- PD for Shared Solutions
- On-going (at school request) de-escalation and personal safety training and/or specific behaviour crisis intervention training

Cost Sharing Arrangements

Where feasible the board enters into agreements to facilitate staff development. A number of agencies and institutions have partnered with the board in this area. They include:

- Trillium Health Centre
- Geneva Centre for Autism
- Peel Children's Centre
- Ministry of Education – SEA
- Ministry of Children and Youth Services
- Success by 6
- Ministry of Colleges and Universities
- York University
- Brock University
- Sheridan College
- Humber College

TRANSPORTATION

Purpose of the Standard:

To provide details of the board's transportation policies to the ministry and to the public.

What you will find in this section:

- description of the types of students with special needs who are eligible to receive transportation and the ways in which these students can access the transportation
- students in special education programs, including students who are in regular classrooms
- students in educational care and treatment, and correctional facilities
- students attending Provincial and Demonstration Schools
- students who require transportation in order to attend summer school programs
- process for deciding whether a student with special needs will be transported with other children or whether it is in the best interests of the student to be transported separately
- safety criteria used by the board in tendering and the selection of transportation providers for exceptional students

Safety Criteria

Wheelchair Service	<ul style="list-style-type: none">• all vehicles used comply with Ministry of Transport regulations, including wheelchair securement processes and devices• drivers are specifically selected for this service based on experience, personality and driving record
Driver Training	<p>Each company trains their staff with respect to the transportation of students with special education needs. The following outlines the training provided:</p> <ul style="list-style-type: none">• all drivers require a criminal record check• companies provide training on an individual needs basis to drivers transporting students with special needs• all companies train their drivers on the use of epi-pens• companies provide on going training throughout the school year in areas such as evacuation, student behaviour, etc.

Types of Students with Special Needs Eligible for Transportation and Access

Types of students/transportation	Ways to Access						
Students in special education programs	<ul style="list-style-type: none"> • Special Education Resource Teachers (SERTs) forward approved lists of students identified to special education programs to the Student Transportation Department • All identified students are considered eligible for transportation where the special class placement is in a school different from their home school and beyond the distance guidelines • A specific identified need may warrant transportation regardless of distance 						
Students in mainstream placements	<ul style="list-style-type: none"> • Consultants forward approved lists of students identified to special education programs to the Student Transportation Department • All identified students are considered eligible for transportation where the special class placement is in a school different from their home school and beyond the distance guidelines • A specific identified need may warrant transportation regardless of distance 						
Students in educational care and treatment	<ul style="list-style-type: none"> • Specific requirements and details regarding the student and service requirements are received from Care and/or Treatment Programs, Custody and Correctional Facilities co-ordinator • Service is provided utilizing either contracted mini van or taxis • Transportation to care and treatment facilities are maintained during the summer months for those students approved and designated as 12 month attendees 						
<p>Students attending Provincial and Demonstration Schools</p> <table style="width: 100%; border: none;"> <tr> <td style="width: 80%;">E. C. Drury</td> <td style="text-align: right;">62</td> </tr> <tr> <td>Trillium</td> <td style="text-align: right;">6</td> </tr> <tr> <td>W. Ross MacDonald</td> <td style="text-align: right;">17</td> </tr> </table>	E. C. Drury	62	Trillium	6	W. Ross MacDonald	17	<ul style="list-style-type: none"> • Provincial Schools provide a list of students, from PDSB who are enrolled in the Provincial School • Transportation staff designs a segregated route system for both daily and weekly residential students • Communication is directly with parents regarding pick up and drop off times as well as necessary adjustments • Revisions to student data and new or deleted student information is received from the Provincial school on an ongoing basis throughout the school year
E. C. Drury	62						
Trillium	6						
W. Ross MacDonald	17						

<p>Students who require transportation in order to attend summer school programs</p>	<ul style="list-style-type: none"> • No transportation service is provided for secondary students attending summer school • Elementary summer school (Grade 7 and 8) students are provided with bussing to the designated summer school site from the neighbourhood school • Centralized stops, located only at schools, are established for this service and route information is provided to all schools prior to the end of June • Students are required to get themselves to the centralized stops • Exceptions to this apply only in the case of students with physical disabilities or exceptional rural circumstances
<ul style="list-style-type: none"> • 20 passenger van • 5 passenger mini van • wheelchair accessible vehicle • taxi • regular school bus 	<ul style="list-style-type: none"> • Decisions about type of vehicle are made collaboratively with the involvement of any or all of the following: <ul style="list-style-type: none"> SERT/Consultant Co-ordinator School personnel Superintendent Transportation officers